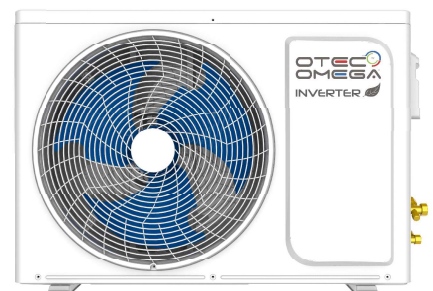
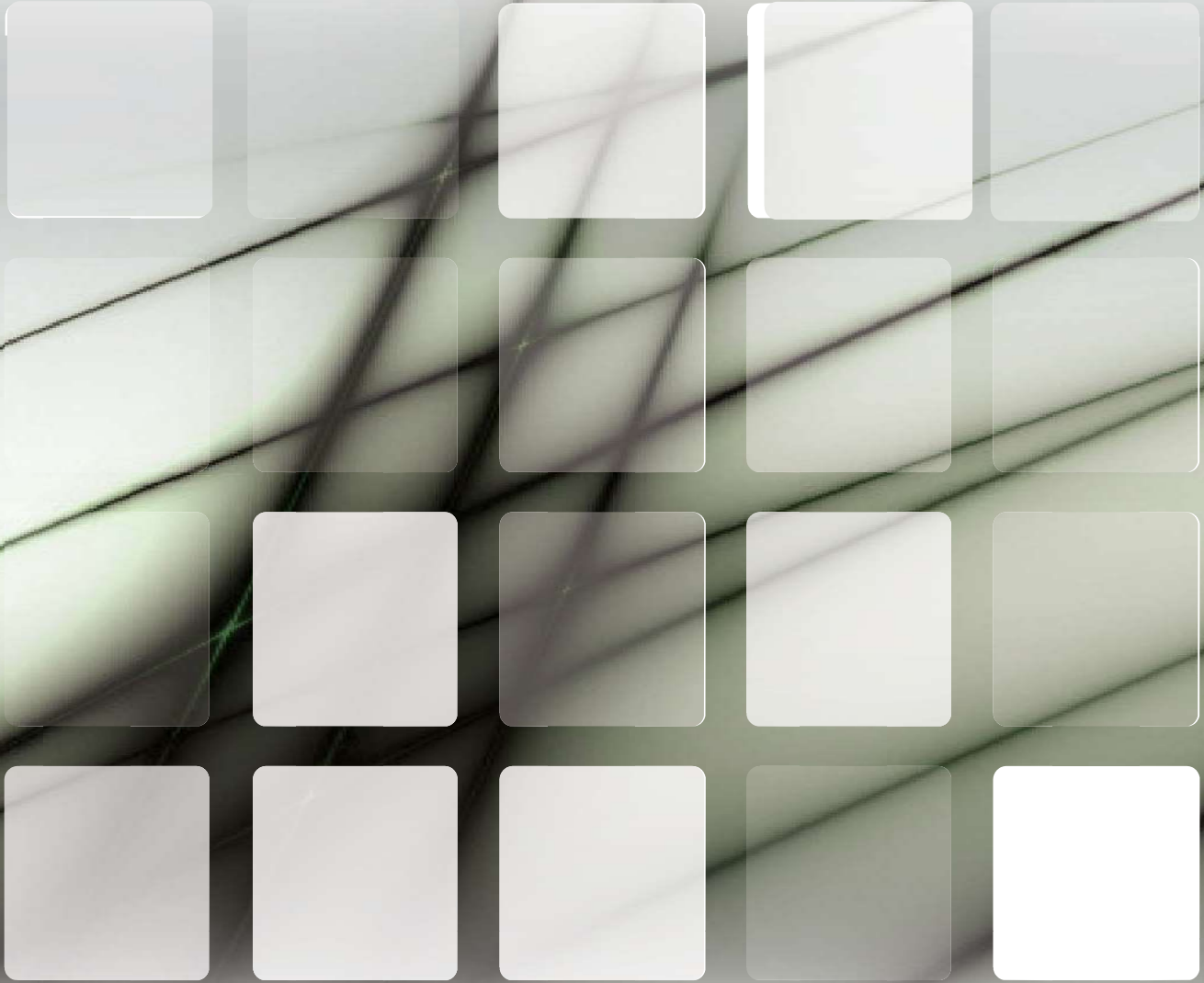


IEWH/ICHH Series High Wall Inverter Technical Manual

220-240V/1/50Hz



CONTENTS

1. SAFETY INSTRUCTIONS

Symbol Description.....	2
Installation Instruction.....	2
Operating Instruction.....	3
Safety Instruction.....	6

2. PRODUCT INTRODUCTION

Protect Functions.....	7
------------------------	---

3. DESCRIPTION OF COMPONENTS

View of Unit.....	8
Display screen.....	9
Indicator light.....	10
Remote Controller.....	11
Remote Controller Display.....	12

4. Wifi Smart Air Conditioner App

Wifi Instructions	20
-------------------------	----



GENERAL SAFETY PRECAUTION

- It is strongly recommended to read the instructions carefully before using your device.
- Use the air conditioner as specified in this guide. These instructions are not intended to cover all conditions and situations. As with any home appliance products, common sense and caution are recommended for installation, use and maintenance.
- Packaging materials are recyclable and should be thrown in appropriate containers. The air conditioner must also be thrown in a recycling center when it is condemned.
- The manufacturer declines all responsibility for damage caused by non-observance of the safety instructions in this user manual.
- Power supply: The electrical installation must comply with local electrical standard, especially for grounding. We cannot be held responsible for any incident caused by improper electrical installation.
- Electrical installation advices:
 - Do not use an extension cord, adapter or power strip
 - Make sure the power plug has the ground wire
 - The socket must be easily accessible but out of reach of children



SAFETY RULES AND RECOMMENDATIONS FOR INSTALLATION

WARNING

- The installation must be entrusted by the dealer or an authorized technician as it requires special knowledge and skills. If you install the unit yourself, there is a risk of fire, electric shock, injury, or water leakage.
- Make sure the base of the outdoor unit is securely fastened.
- Make sure that air cannot enter the refrigerated system and check for refrigerant leakage by moving the unit.
- The fuses installed in the integrated control are 3.15A / 250V for 220V and 3.15A / 125V for 110V.
The user must protect the wall unit with a fuse of sufficient capacity for the maximum power current or other overvoltage protection device.
- It is necessary to incorporate in the fixed wiring a device for disconnecting the power supply, the distance between the contacts must be at least 3 mm between each pole.
- The appliance must be installed according to the regional standards in force.
- The device must be installed according to national wiring regulations.
- Make sure that the main voltage corresponds to the one indicated on the identification plate.
- You may be shocked even if you turn off the power.
- Keep the switch or plug clean.
- Insert the plug correctly into the socket, avoiding the risk of electric shock or fire due to insufficient contact.
- You must use an independent electrical outlet to connect the unit. If you use another electrical outlet, a fire may occur.
- Check that the male and female plugs are compatible, if not pls proceed to change them.
- Do not install the appliance at a distance of less than 50 cm from flammable substances (alcohol, etc.) or pressurized containers (aerosol cans).
- If the unit is used in locations where ventilation is not available, care must be taken to prevent refrigerant leakage, which could result in a fire hazard.
- Avoid installing the unit in a location where flammable gas leaks may occur. A fire could start in case of gas leakage or gas accumulation around the unit.
- Do not install it in an excessively humid place, such as in a bathroom. Deterioration of the insulation may result in electric shock or fire.
- Before accessing the connection terminals, all power circuits must be disconnected from the power source.
- Grounding must be done by the dealer or an authorized technician. Insufficient or incorrect grounding may cause a fire.
- It is highly recommended to Perform an operation test after installing the air conditioner and save the operation data.





SAFETY RULES AND RECOMMENDATIONS FOR USE

PROHIBITION

- Never switch on or off the circuit breaker or touch the buttons with wet hands. You may be shocked.
- Do not insert your fingers or other objects into the air inlet / outlet grilles.
- Do not insert any object or liquid (metal object, piece of paper, water, etc.) into the air inlet or outlet grille. The internal blower (which can rotate at high speed) or the high voltage sections can cause injury or electric shock.
- Do not clean the inside of the air conditioner yourself. Ask your dealer to clean the air conditioner internally. Improper cleaning can result in breakage of resin parts or deterioration of the insulation of electrical components, which may result in water leakage, electric shock or fire.
- Do not place heavy objects on the power cable, expose it to heat, or pull on it. Otherwise, there is a risk of electric shock or fire.
- Do not use any other refrigerant than the one specified. Otherwise, abnormally high pressure may occur in the refrigeration cycle, which can lead to product malfunction, explosion or even personal injury.
- Do not bend, pull or crush the power cord as this may damage it.
- Electric shocks and fires are usually caused by a damaged power cord. Only a qualified technician should replace a damaged power cord.
- Do not use an extension cord or multiple plug.
- Do not touch the device if parts of your body are humid or wet.
- Do not obstruct the air inlet or outlet of the wall unit or outdoor unit.
- Clogging of these openings could cause a decrease in the efficiency of the air conditioner with the possibility of subsequent failures.
- Do not alter the characteristics of the device in any way.
- Do not install the unit in an environment that may contain gasoline, oil, or sulfur or near a heat source.
- Do not climb, do not place heavy or hot objects on the top of the unit.
- Do not leave doors or windows open for extended periods while the air conditioner is running.
- Do not direct the air flow onto plants or animals.
- Prolonged direct exposure to the cold air conditioner could have a negative effect on plants or animals.
- Do not put the air conditioner in contact with water. Electrical insulation could be damaged and cause a risk of electric shock.
- Do not climb or place objects on the outdoor unit.
- Never insert a stick or similar object into the outdoor unit. You could be seriously injured.

WARNING

- The manufacturer declines all responsibility for damage caused by non-observance of the safety instructions in this user manual.
- Be careful not to install, repair, open or remove the cabinet. You may be exposed to dangerous voltages. Ask the dealer or a professional to do so.
- Always use the air conditioner with the air filter in place. Use without the air filter could cause excessive accumulation of dust and other residues on the internal components resulting in subsequent failures.
- The fins should be down in heating mode and up in cooling mode.
- Selecting the most appropriate temperature may prevent damage to the unit.
- Do not expose your body directly to cold or hot air for a long time.
- In the event of a malfunction (burning smell, etc.), switch off the air conditioner and switch off the circuit breaker.
- Be careful not to disassemble, modify or move the device yourself. You may cause a fire, electric shock, or water leak. If the cables are damaged, there is a risk of electric shock or fire. Always contact your dealer to repair or move the unit.
- If a malfunction occurs (especially if there is a burning smell from the unit or the unit is no longer cooling), immediately stop using the unit and turn off the circuit breaker. If you continue to use the product under these conditions, you may be subjected to electric shock or fire. Always contact your dealer to repair or have the device inspected.
- Do not connect the ground wire to a gas pipe, water pipe, lightning rod or to the telephone earth line.
- If the drain hose of the indoor unit is exposed due to moving the unit, close the opening.
- Do not touch the internal electrical components as this may result in electric shock or injury.
- If the air conditioner does not cool or heat up, it is possible that refrigerant leakage has occurred. Contact your dealer. The refrigerant used in the air conditioner is well protected. It will not leak under normal conditions of use. Nevertheless, if a leak occurs and the fluid comes into contact with a heat source, especially with a radiator or a range, a harmful reaction can take place.



- In case of unusual noises, stop using the device immediately and switch off the circuit breaker. If you continue to use the product under these conditions, it may cause a fire or electric shock. Contact your dealer for service.
 - Be careful not to damage or modify the power cable. Be sure to connect the cable correctly and do not use a multi-plug where other devices are connected. Otherwise, a fire may occur.
 - This device is not intended to be used by persons (including children) with reduced physical or mental abilities.
 - Children must be supervised so that they do not play with the device.
 - Check that the circuit breaker is correctly installed. Failure to install the circuit breaker properly may result in electric shock. To check the installation method, contact your dealer or the authorized service technician who installed the unit.
 - If you use the appliance in a closed room or with other combustion appliances, ventilate the room regularly by opening a window. Insufficient ventilation may result in asphyxiation due to a lack of oxygen.
 - Avoid using the device for a long time in an excessively humid environment (where the humidity is above 80%), especially when windows and doors are left open. Condensation may be formed in the indoor unit and water may flow on your furniture, which may damage the unit.
 - In case of prolonged disuse, turn off the switch or disconnect the main circuit breaker.
 - It is recommended to entrust the maintenance of the device to a specialist in case of prolonged use.
 - At least once a year, check if the mounting table of the outdoor unit is damaged. If you do not perform this check and the table is damaged, the unit may fall and injure someone.
 - Use a stable and sturdy ladder to install / remove the front panel / air filter. Otherwise, you risk to fall and injure yourself.
 - Do not hang on the outdoor unit and do not place any object on it. This may indeed tip over or fall, and you could hurt yourself. Damage to the unit may cause electric shock or fire.
 - Do not use combustion equipment directly in the airflow of the air conditioner. Poor combustion can lead to asphyxiation.
 - Check that the water is properly drained. If the exhaust system is clogged, leakage may occur and water may damage your furniture. To verify that the installation method used is correct, contact your dealer or the authorized service technician who installed the unit.
 - Do not place any containers filled with liquids, such as vases, on the apparatus. Otherwise, the liquid in the container may get inside the unit and damage the electrical insulator, which may cause an electric shock.
 - Do not place any other electrical appliance or furniture under the unit. Drops of water could fall on them, which could damage the furniture or the appliance.
 - Be careful not to place animals or plants directly in the airflow of the air conditioner. This can affect the health of the animals or plants.
 - Do not place objects near the outdoor unit and regularly clean dead leaves that fall around. Dead leaves attract small animals, which can come into contact with the electrical components of the appliance, which may cause a malfunction or fire.
 - Do not use the appliance for other purposes than the one designed, such as for storing food or animals, or as a support for plants, precision appliances or art works. Do not use the unit in a boat or other vehicle as this may cause the unit to malfunction or damage the vehicle. When you clean it, you must turn off the power and turn off the breaker. Since the internal blower can turn at high speed, you could hurt yourself.
Do not clean the main unit with water as this may cause an electric shock.
 - After cleaning the front panel or air filter, carefully wipe off any splashing water and let it dry. The presence of water may cause an electric shock.
 - After removing the front panel, do not touch the metal parts of the unit. You could hurt yourself.
 - Do not touch the air intake section or aluminum fins of the unit. You could hurt yourself.
- If thunder rumbles and lightning announces a thunderstorm, stop using the device and turn off the breaker. Lightning may cause a malfunction.

BATTERY REMOTE CONTROL



- Observe the (+) and (-) polarities when inserting the batteries.
- Do not recharge the batteries.
- Do not use batteries whose recommended period of use has expired.
- Be sure to remove used batteries from the remote control.
- Do not use batteries of different types at the same time and do not use new batteries with used batteries.
- Do not solder the batteries.
- Be careful not to short-circuit, disassemble, heat, or burn batteries. If the batteries are discarded incorrectly, they may explode or leak, possibly resulting in burns or injury.
- If your skin comes into contact with the battery fluid, rinse immediately with plenty of water. If liquid is flowing on devices, wipe it to prevent direct contact.
- Keep batteries out of reach of young children. If a child swallows a battery, consult a doctor immediately.

SAFETY PRECAUTIONS





WARNING: Following these basic precautions will reduce the risk of fire, electrical shock, injury or death when using your air conditioner.

1. Air conditioner must be connected to proper electrical outlet or breaker with the correct electrical supply. And only the specified power can be used.
2. Proper grounding must be ensured to reduce the risk of shock and fire
DO NOT CUT OR REMOVE THE GROUNDING PRONG. If you do not have a three-prong electric receptacle outlet or breaker in the wall, have a certified electrician install the proper receptacle or breaker. The wall receptacle or breaker **MUST** be properly grounded.
3. **DO NOT** use if power cord is frayed or otherwise damaged. Also avoid using it if there are cracks or abrasion damage along the length, plug or connector.
4. **DO NOT USE AN ADAPTER OR AN EXTENSION CORD.**
5. **DO NOT** block airflow inside or outside the air conditioner with blinds, drapes, protective covers, shrubs or blusher.
6. Be careful of sharp edges on the front and rear fins of the unit that could cut and cause serious injury.
7. Be careful when lifting the air conditioner to install or remove the unit. Always use two or more people for this.
8. Always cut off the power of air conditioner before servicing it or moving it.
9. In some type of units, there is no appropriate plug corresponding to its power cord because of power, Under this condition, an appropriate power breaker should be linked to its power cord, therefore, the instruction part associated with plug using is not available for these types.
10. An all-pole disconnection switch having a contact separation of at least 3mm in all poles should be connected in fixed wiring.
11. The appliance shall be installed in accordance with national wiring regulations.
12. This appliance is not intended for use by persons (including children) with reduced physical, sensory or mental capabilities, or lack of experience and knowledge, unless they have been given supervision or instruction concerning use of the appliance by a person responsible for their safety. Children should be supervised to ensure that they do not play with the appliance.

SAFETY INSTRUCTIONS

〔Symbol Description〕

	Warning: A symbol indicating operation which may cause personnel casualties or serious damages.
	Caution: A symbol indicating operation which may cause personnel casualties or property damages.

〔Installation Instruction〕



Never install by yourself.

Split type air conditioner will work for you for a long period of time if it is correctly installed. Improper installation could cause problems such as leakage of water or refrigerant, electric shock or fire.

If the power cable to the unit is disconnected, burnt, chipped, or detached from the terminal, to make reparations, please contact the nearest service center, or repaired by people who have the same qualifications or experience to avoid electrical hazards.



Please confirm the following before installation



Power specifications

Make sure that the capacity of socket or breaker and power cable is sufficient, the voltage is correct and the socket or breaker is grounded. There may be hazard of fire or electric shock otherwise.



Installation environments

Do not install air conditioner at the place where there is flammable or corrosive air.



Proper connection of wires and piping

Improper connection may decrease the efficiency or cause air conditioner stop running. Water or refrigerant leakage may be resulted as well.



Operating instruction

Please operate air conditioner in accordance to this manual.

〔Operating Instruction〕

WARNINGS

Following the safety messages is very important. These messages can save you from being injured or killed. Warning symbols alert you to be careful and means danger. Always follow instructions to be safe and reduce chances of injury or death. Warning and danger signs will precede safety messages.

Electrical safety

Grounding: This room air conditioner must be grounded.



Grounding reduces the risk of electric shock by providing an escape wire for the electric current.

If the power cord has a grounding plug with a grounding wire, plug it into an outlet that is properly installed and grounded.

If the power cord has not a grounding plug with a grounding wire, the grounding wire must connect the breaker that is properly installed and grounded.

Warning: Improper use of the grounding plug or breaker can result in a risk of electric shock. Call a qualified electrician if you don't understand the grounding instructions or if you are not sure if the air conditioner is properly grounded. If the wall outlet or breaker is not grounded, please contact an electrician to have it replaced with a properly grounded outlet or breaker.

Do not, under any circumstances, cut or remove the third (ground) prong from the power cord.

Adapter plug: We strongly advise against using an adapter plug or breaker.

Operating conditions

1. Temperature: T1 instance: $-7^{\circ}\text{C}\sim 45^{\circ}\text{C}$ ($16^{\circ}\text{C}\sim 45^{\circ}\text{C}$ in cooling-only type)

T3 instance: $-7^{\circ}\text{C}\sim 52^{\circ}\text{C}$ ($16^{\circ}\text{C}\sim 52^{\circ}\text{C}$ in cooling-only type)

If the unit runs beyond the temperature for a long time, it may cause cooling capacity to decrease or protector to work.

2. Relative humidity: <80%

If the unit runs beyond the humidity range, condensate may be formed near blade and outlet of air conditioner. It's normal.

-
3. In heating operation, strange smell may come from the unit. It is Normal phenomenon.
 4. The performance parameters refer to name plate.
 5. The waterproof level of indoor unit is IPX0. Do not use it in the laundry or bathroom.
 6. The outdoor unit can' t be installed in a closed area.

Tips

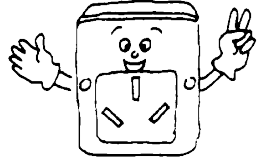
- Install the unit on the north side, as normally that is the shaded side. This will enhance the operation of your unit.
- Use correct electric voltage and proper ampere for the unit to run effectively.
- Only let a certified electrician do any modifications to your electrical outlet or breaker.
- Use a dedicated line for the operation of your air conditioner to avoid the possibility of an electrical surge.
- If the supply cord is damaged, it must be replaced by the manufacturer or its service agent or a similarly qualified person in order to avoid a hazard.
- The dimensions of the space necessary for correct installation of the appliance including the minimum permissible distances to adjacent structures.
- The appliance shall be installed in accordance with national wiring regulations.
- Disconnect the power supply before cleaning and maintenance.
- If the appliance is not connected by plug, an all-pole disconnection device which has at least 3mm separation distance in all pole and a residual current device(RCD)with the rating of above 10mA shall be incorporated in the fixed wiring according to the national rule.
- If the appliance is connected by plug, it must be positioned so that the plug is accessible.

Energy Saving Guide

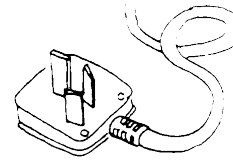
- When installing your air conditioner make sure to seal all areas where there is a possibility of air leakage.
 - Airflow should not be blocked inside either by curtains, drapes or furniture or outside by shrubs or bushes.
 - Do not needlessly use an electrical light or other appliances that produce heat.
 - Keep the blinds and the drapes drawn on all the other window.
 - While cooking use an exhaust fan in the kitchen to remove the excess heat produced.
-

〔Operating Instruction〕

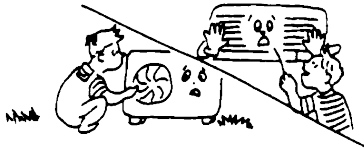
Only single-phase a.c. power can be used.
please refer to nameplate for details.



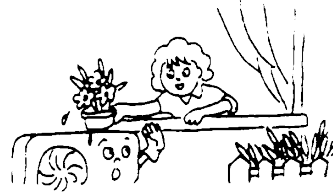
Use the specified power cord; do not change it.



Do not put fingers or sticks into the inlet or outlet of air conditioner; the running fan may cause injuries.



Do not put anything on the outdoor unit.



Do not switch on or off the unit by plugging or pulling off the plug, or by switching on or off the breaker .



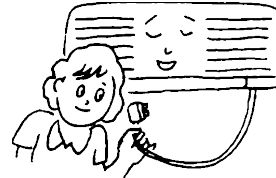
Keep indoor ventilated, especially when there is operating gas equipment.



Do not substitute fuse with lead wire or other materials.



Pull off power plug or switch off breaker if the air conditioner is not used for a long time.



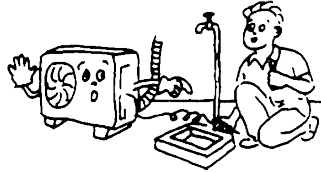
[Safety Instruction]



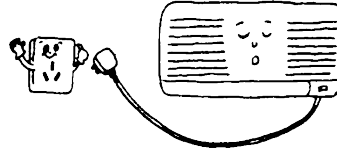
Warning:

The appliance is not intend for use by young children or infirm persons without supervision.
Young children should be supervised to ensure that they do not play with the appliance.
If the supply cord is damaged, it must be replaced by the manufacturer or its service agent or a similarly qualified person in order to avoid a hazard.

Don not connect the earth line to gas pipe, water pipe. Improper grounding may cause electric shock.



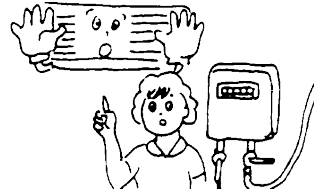
Do not pull off the power plug or switch off the breaker when it is in operation.



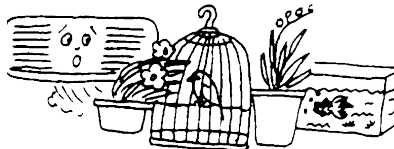
Switch off the unit; cut off the power source and contact service agent if there is abnormal phenomenon (e.g. burning smell comes out).



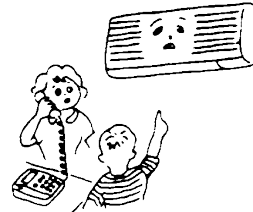
Do not install air conditioner at the place where flammable gas may leak.



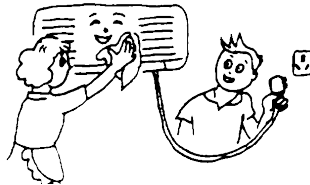
Do not place plants or animals directly in the path of the air conditioner's airflow. Doing so could harm them.



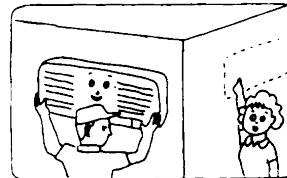
Please contact service agents for service. Improper service may cause accident.



Switch off the unit, cut off the power source and make sure the fan stops before cleaning the unit.



For removal and installation of air conditioner, please refer to professionals or contact service agents.



PRODUCT INTRODUCTION

〔Protect Functions〕

Protect functions can prolong the air conditioner's service life and provide more comfortable airflow.

Delay-starting protection for the compressor

The compressor will restart working at least 3 minutes (5 minutes in heating mode) after being turned off to keep the pressure balance of the cooling system.

Remarks: There will be 1 minute for the compressor to work after the unit is electrified for the first time.

Freeze-prevention

To prevent indoor heat exchanger freezing in cooling and dehumidification operation, compressor or outdoor fan may stop running; indoor fan speed will be adjusted to a higher gear automatically.

Dry for enzyme-prevention (optional)

Indoor fan motor will go on running for 3 minutes at low fan speed when turned off in cooling mode in order to keep dry condition inside the unit.

Reset power or Auto restart(alternative)

Reset power: When there is a power suspension, air conditioner will automatically switch off. When the power is back, the unit will automatically reset power. For energy saving if there is no person in the room, air conditioner will stay in PAUSE status. User needs to turn on Air conditioner by remote controller.

Auto restart: The unit memories the operation mode, air flow setting, temperature setting etc., so that should there be a power failure when the unit is in operation, it will automatically return the same operating conditions when the power is restored.

Cooling overload working (optional)

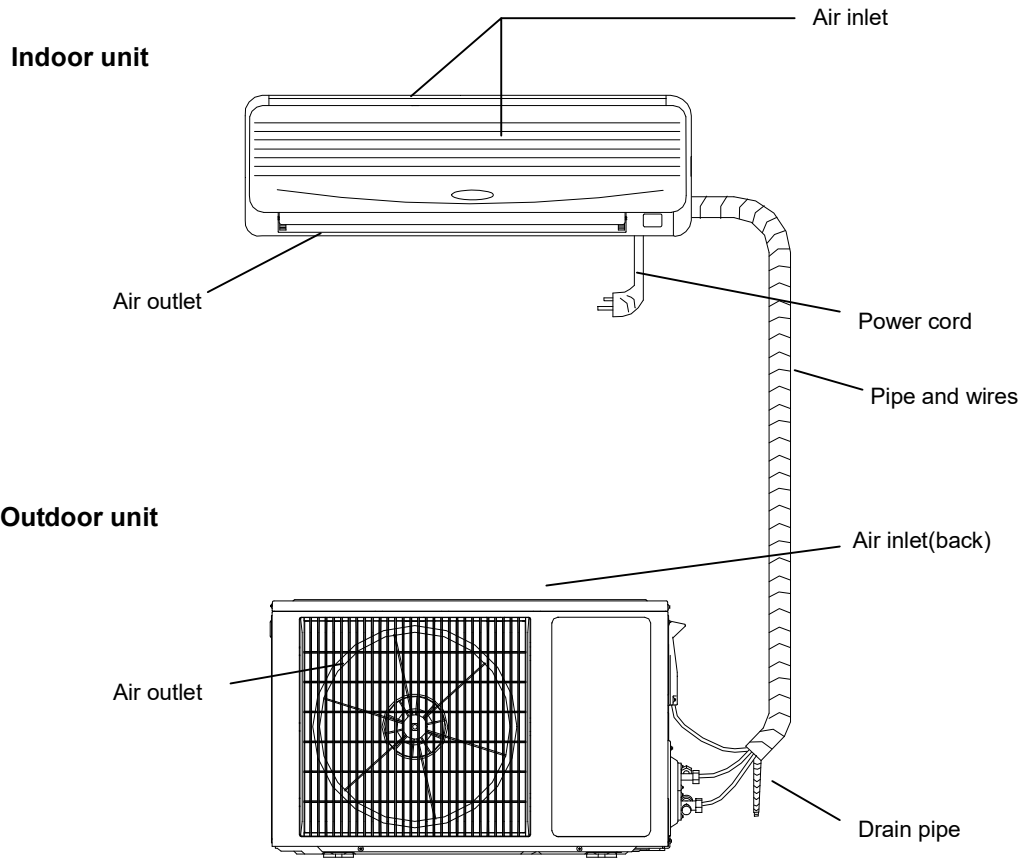
In cooling operation, if the temperature of outdoor heat exchanger is too high, indoor fan speed will be adjusted to a lower gear automatically and compressor may be stopped.

Drip proof (optional)

In cooling and dehumidification operation, louver blades can change the position automatically to prevent from dripping.

DESCRIPTION OF COMPONENTS

〔View of Unit〕



Remarks:

The air conditioner is consisting of indoor unit, outdoor unit and remote controller. The design and shape are different for different models. The above figures are only schematic, and they may be slightly different from the actual appliances you selected.

〔Display screen〕



“**RUN**” indicator: This signal light is on when the unit is in “RUNNING” status. When in Defrosting or Cooling airflow proof, the indicator is flashing



“**TIMER**” indicator: This signal light is on when the unit is in Timer.



“**compressor**” indicator: This signal light is on when the compressor is running
(optional)



“**Temperature**” indicator : This display can show the set temperature. when the indicator display F4,F1 or F2, means the air conditioner runs abnormally

(The above LED display is for reference only, subject to the actual product)

Remarks:

1. Flashing of any indicator means the air conditioner runs abnormally, please contact the distributor in time.
2. Function a: The air conditioner will only display “RUN” indicator to save electricity if it do not receive any signal from remote controller in 30 seconds. If it receives signal from remote controller for the second time, the display will still show the corresponding indicators.

Function b: The indicators on the display screen can be still controlled by “ **DISPLAY**” button on remote controller.

NOTE: Function a or function b is optional, and it is designed already before the product is dispatched from factory.

【Indicator light】

① “PAUSE” indicator

This indicator lights red when air conditioner is in defrosting or Cooling airflow proof mode.

② “RUNNING” indicator

This indicator lights green when the unit is in “RUNNING” status; air conditioner is in HEAT, COOL, SWEEP, DRY mode.

③ “TIMER” indicator (Yellow)

This indicator lights yellow when the unit is in TIMER mode.

④ “AIR REFRESH” indicator (Green) (optional)

This indicator lights green when the unit is in Air Refresh operation, and it will not light if the unit does not have Air Refresh function.

⑤ “RECEIVER” indicator

This receiver receives signal from remote controller.

Note: If one of the “RUNNING”, “PAUSE” or “TIMER” indicator flashes, please contact the distributor in time.

Specifications

INDOOR MODEL NUMBER		IEWH00913A-CWJ026C(L)	IEWH01213A-CWJ035C(L)	IEWH01813A-CWJ053C(L)	IEWH02413A-CWJ070C(L)		
OUTDOOR MODEL NUMBER		ICHH00913A-CTJ026GF	ICHH01213A-CTJ035GF	ICHH01813A-CTJ053GF	ICHH02413A-CSJ070GF		
NOMINAL CAPACITY		BTU (kw)	9000 (2.8)	12000 (3.6)	18000 (5.6)	24000 (7.1)	
Power supply		V-PH-Hz	220-240V/1/50HZ	220-240V/1/50HZ	220-240V/1/50HZ	220-240V/1/50HZ	
Power Supply Mode			Indoor	Indoor	Indoor	Indoor	
Control type			Remote	Remote	Remote	Remote	
Cooling	Capacity	BTU	9000	12000	18000	24000	
	Power Input	W	879	1135	1702	2198	
	Rated Current	A	4.0	5.2	7.7	10.0	
	SEER		19.00	19.00	19.00	19.00	
Moisture removal		L/h	1.0	1.2	1.8	2.2	
Max. input consumption		W	1319	1702	2553	3297	
Max. current		A	6.2	8.0	12.0	15.5	
Indoor unit	Motor speed (TU/Hi/Mi/Lo)	RPM	1320	1320	1250	1150	
	Indoor air flow	CFM	500/450/400/350	550/500/450/400	820/720/620/520	1200/1050/900/800	
	Noise level	dB(A)	40/38/36/34	42/40/38/36	44/41/38/35	46/43/40/37	
	Unit dimension (W*H*D)	mm	720*196*270	790*200*270	900*220*291	1025*320*235	
		in	28 1/2 x 7 3/4 x 10 3/4	31 1/4 x 8 x 10 3/4	35 1/2 x 8 3/4 x 15 1/2	40 1/2 x 12 1/2 x 9 1/2	
	Packing (W*H*D)	mm	800*265*330	870*265*335	970*290*345	1105*315*405	
		in	31 1/2 x 10 1/2 x 13	34 1/4 x 10 1/2x13 1/4	38 1/4 x 11 1/2 x 13 1/2	43 1/2 x 12 1/2 x 16	
	Weight lbs (kgs)	Net Weight	15 (7)	17 (8)	27 (12.5)	27 (12.5)	
		Gross Weight	17 (8)	19 (9)	34 (15.5)	34 (15.5)	
	Outdoor unit	Compressor	Type	Rotary	Rotary	Rotary	Rotary
Brand			GMCC	GMCC	GMCC	Sanyo	
Outdoor fan motor		Motor speed	Rpm	860	860	880	850
		Capacitor	uF	2.5	2.5	2.5	3
Noise level		dB(A)	50	50	54	55	
Unit dimension (W*H*D)		mm	660*530*250	660*530*250	780*560*270	820*635*310	
		in	26 x 21 x 10	26 x 21 x 11	31 3/4 x 22 x 10 3/4	32 1/4 x 14 1/2 x 12 1/4	
Packing (W*H*D)		mm	768*575*338	768*575*338	889*612*359	972*680*400	
		in	30 1/4 x 22 3/4 x 13 1/2	30 1/4 x 22 3/4 x 13 1/2	35 x 24 x 14 1/4	38 1/4 x 26 3/4 x 15 3/4	
Weight lbs (kgs)		Net Weight	46 (21)	49 (22.5)	62 (28.5)	81 (37)	
	Gross Weight	52 (24)	56 (25.5)	88 (40)	88 (40)		
Refrigerant type		R410A	R410A	R410A	R410A		
Refrigerant charge	Kg (lbs)	0.4 (0.89)	0.5 (1.10)	0.85 (1.88)	1.53 (3.38)		
Refrigerant Pipe	Liquid side	in	1/4	1/4	1/4	1/4	
	Gas side	in	3/8	3/8	1/2	5/8	
	Max. refrigerant pipe length	ft (m)	30 (9)	40 (12)	40 (12)	50 (15)	
	Max. difference in level	ft (m)	16 (5)	23 (7)	23 (7)	26 (8)	

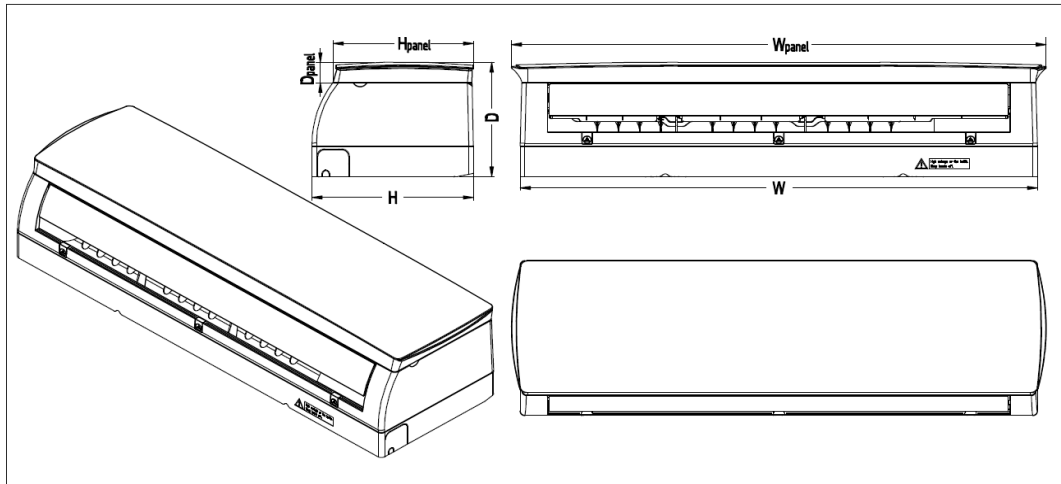
Notes

- Nominal capacities are based on ARI standards 210/240-89, air entering the indoor coil operating at high fan speed for 220V-230V setting. Cooling: 80/67° F (27/19° C) DB/WB indoor & 95° F (35° C) outdoor ambient temperature.
- Rating are based on indoor and outdoor connected by 25ft (7.5m) of tubing. 3. Refrigerant metering device is installed at the outdoor unit as standard. 4. Flare fittings are provided for connecting indoor and outdoor units.
- Insulation of both liquid and suction line is required. 6. Outdoor units are shipped with full operating charge. 7. For details of model number nomenclature, please refer to publication OGMN-1220.

〔Dimensions 〕

• Indoor units

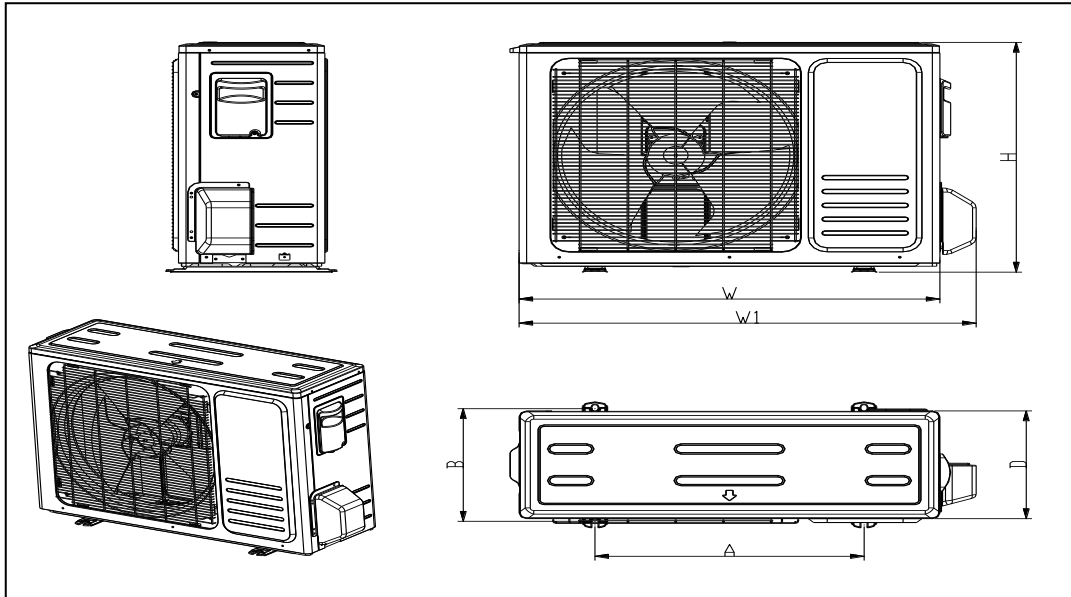
Units mm



Model	W (mm)	H (mm)	D (mm)	Model
12K	790	200	270	2021-BP-015
12K	790	200	270	2021-DP-097
18K	900	220	291	2020-BP-022
18K	908	295	220	2022-BP-061
24K	1025	320	235	2020-BP-019

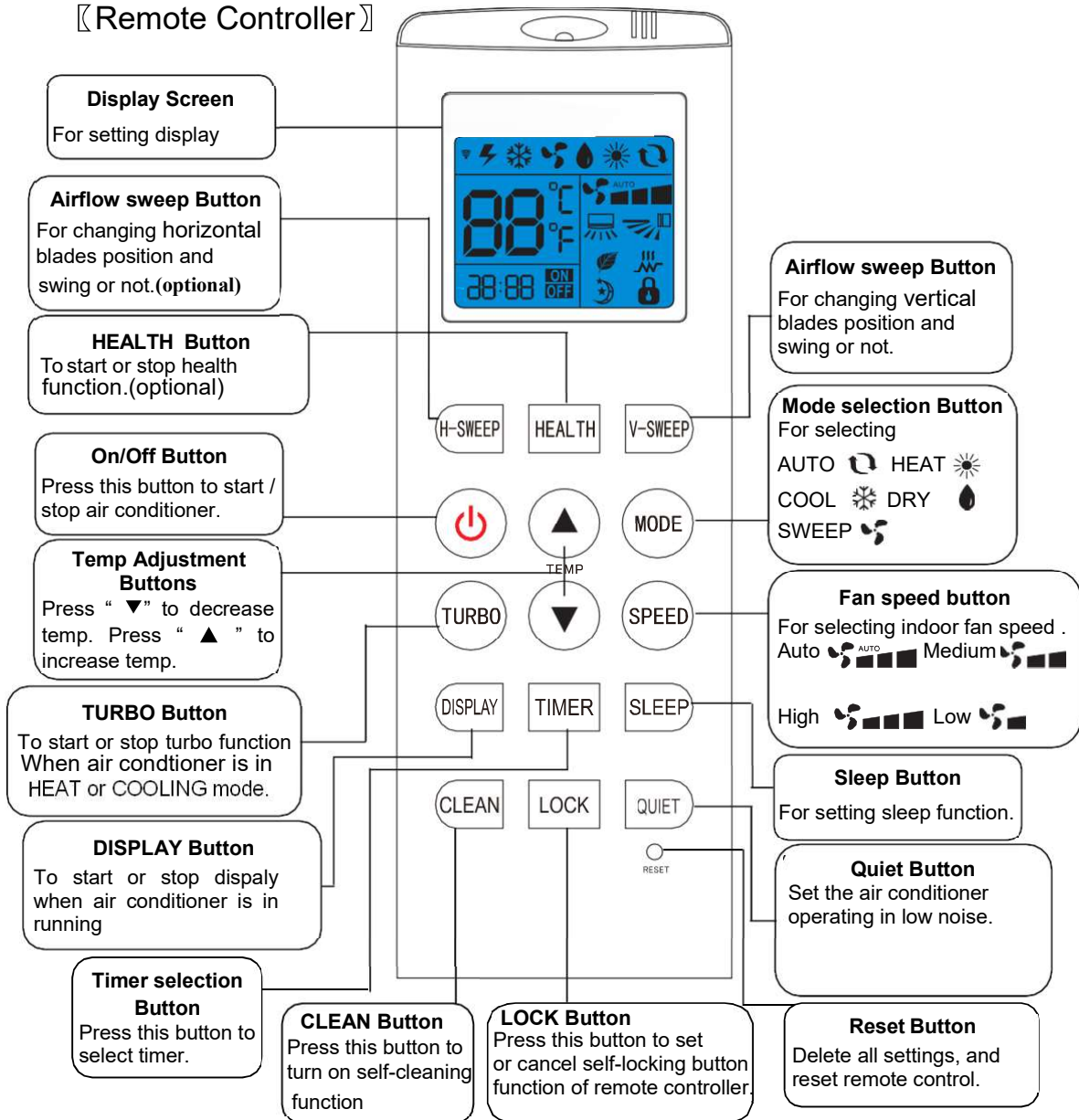
• Outdoor units

Units mm



Model	W (mm)	H (mm)	D (mm)	Model
12K	660	530	250	2021-BP-015
12K	660	530	250	2021-DP-097
18K	780	560	270	2020-BP-022
18K	780	560	270	2022-BP-061
24K	820	635	310	2020-BP-019

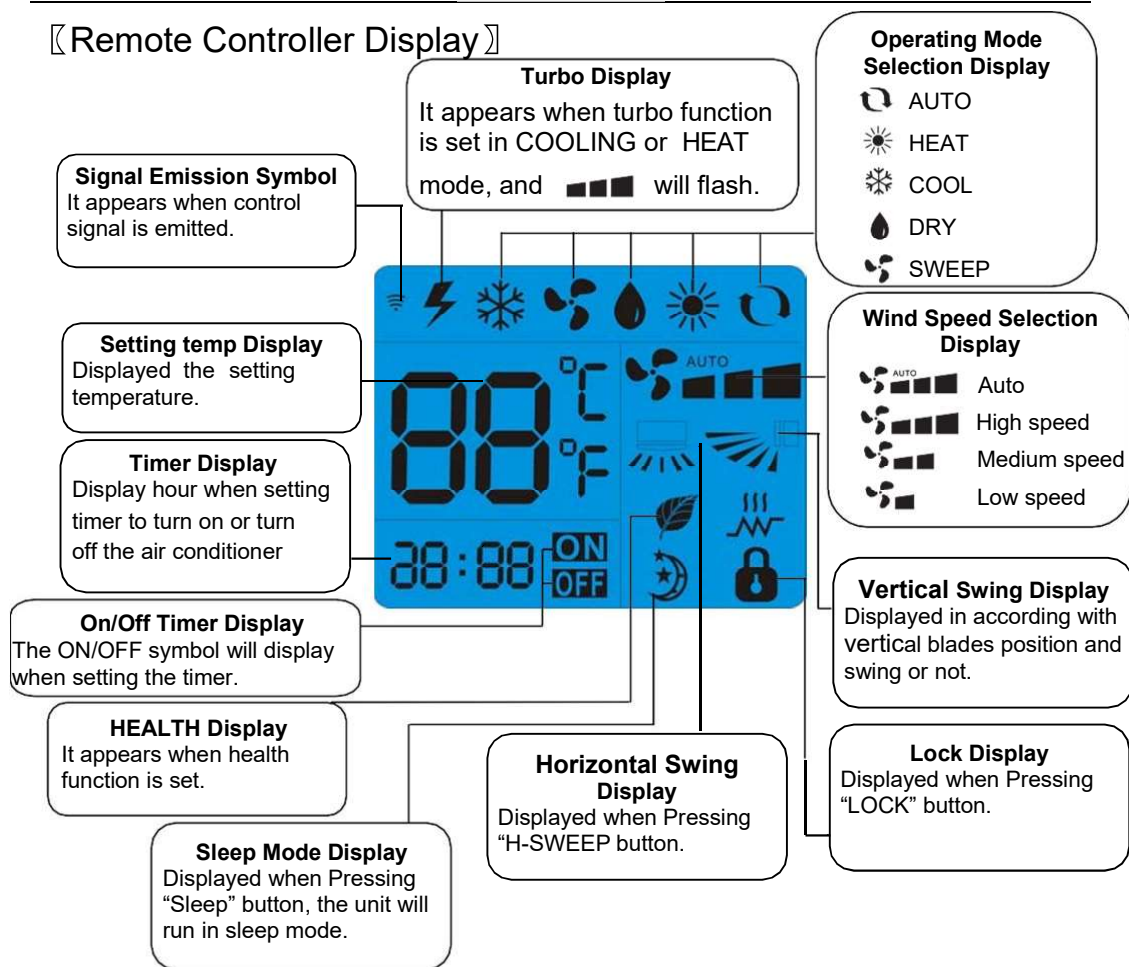
〔 Remote Controller 〕



Remarks:

1. The function and display of Heat is not available for cooling-only air conditioner. .
2. When there is something wrong with the remote controller, please press 'RESET' button and then operate again.
3. HEAT、AUTO function and display are not available for cooling-only type air conditioner.
4. If user want to make the room air cool or warm quickly, user can press "turbo" button in cooling or heating mode, air conditioner will run in power function. If press "turbo" button again, air conditioner will exit power function.
5. The above illustration of remote controller is only for reference, it may be slightly different from the actual product you selected.

〔 Remote Controller Display 〕



Instruction for remote controller

- The remote controller uses two AAA batteries under normal condition, the batteries last for about 6 months. Please use two new batteries of similar type (pay attention to the poles in installing). After replacing the batteries, please use a point object (such as pen tip) to press "Reset" button.
- When using remote controller, please point the signal emitter towards indoor unit receiver; There should be no obstacle between remote controller and indoor unit.
- Pressing two buttons simultaneously will result wrong operation.
- Do not use wireless equipment (such as mobile phone) near indoor unit. If interference occurs because of this, please switch off the unit, pull out power plug, then plug again and switch on after a while.
- There is no direct sunlight to the indoor receiver, or it can not receive the signal from the remote controller.
- Don't cast the remote controller.
- Don't put the remote controller under the sunlight or near the oven.
- Don't sprinkle water or juice on the remote controller, use soft cloth for cleaning if it occurs.
- The batteries must be removed from the appliance before it is scrapped and that they are disposed of safety.

1. Instruction

Smart air conditioner is an air conditioner with Wi-Fi remote control system. It could be controlled by your smartphone with 2.4G Wi-Fi, 2G, 3G ,4G network.

2. App download link

Address : <http://e.tuya.com/smartlife>



Scan the QR code to download Smart App

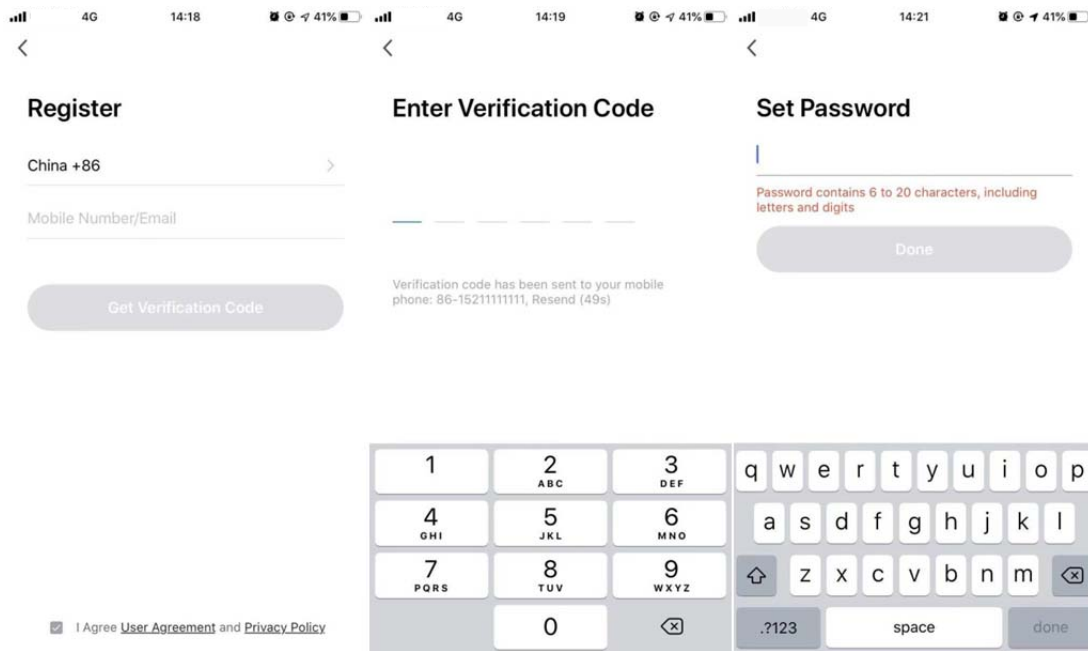
Note: After the initial installation of iOS version, may be prompted to remind, as shown below. Go to Phone Settings - General – Profiles & Device Management, tap on“Hangzhou Miaoyong Technology...”-“Verify Apps”, and select “Verify”. Then open App again



3. Operation instruction

3.1. Register account:

When you open the App for the first time, start your registration. Tap on "Register" at upper right corner of the login page, Type in your Email address or mobile number, tap on "Next" and receive a verification code. Type in the code and confirm your password, and then tap on "Confirm". After successful verification, registration process is finished and App goes to the home page.



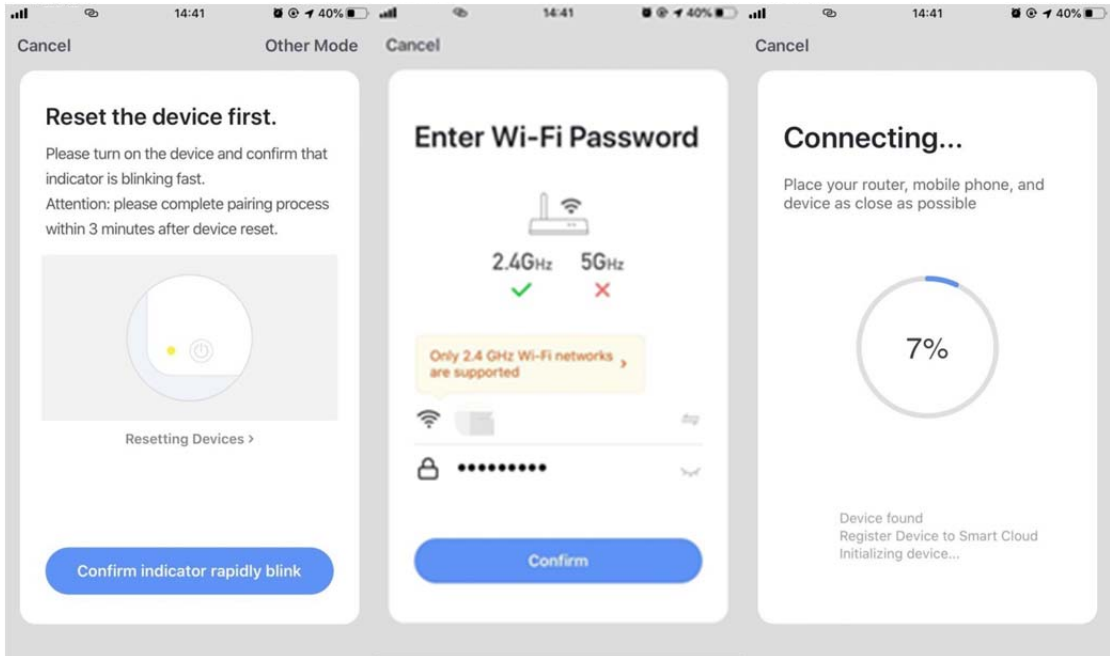
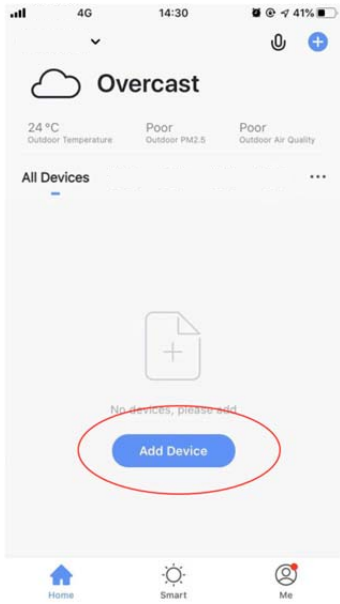
3.2. How to add device?

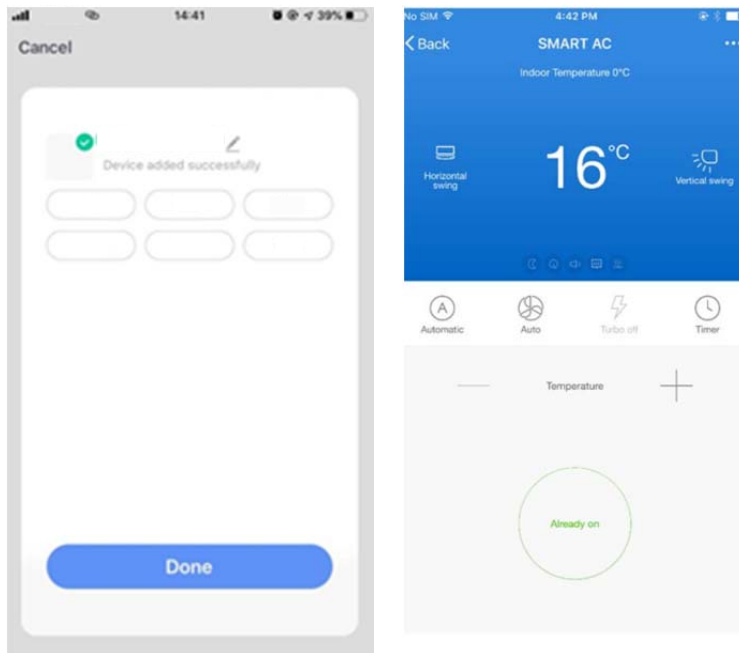
3.2.1 Please make sure that the device is on the pending status awaiting to be connected. If not, please reset the device via the following procedures: Long press the reset-button for 5s— buzzer sounds— the WIFI icon on device is quickly flashing (approx. 3 times/s). Then it indicates that the device is successfully reset and has entered into Smart mode.

3.2.2 Open the App, tap on **【Add device】** , select your own Wi-Fi network, type in your own Wi-Fi router password and tap on " Next" . Then the network configuration starts.

3.2.3 When configuration is successful, you could see the app interface as shown in the screenshot below.

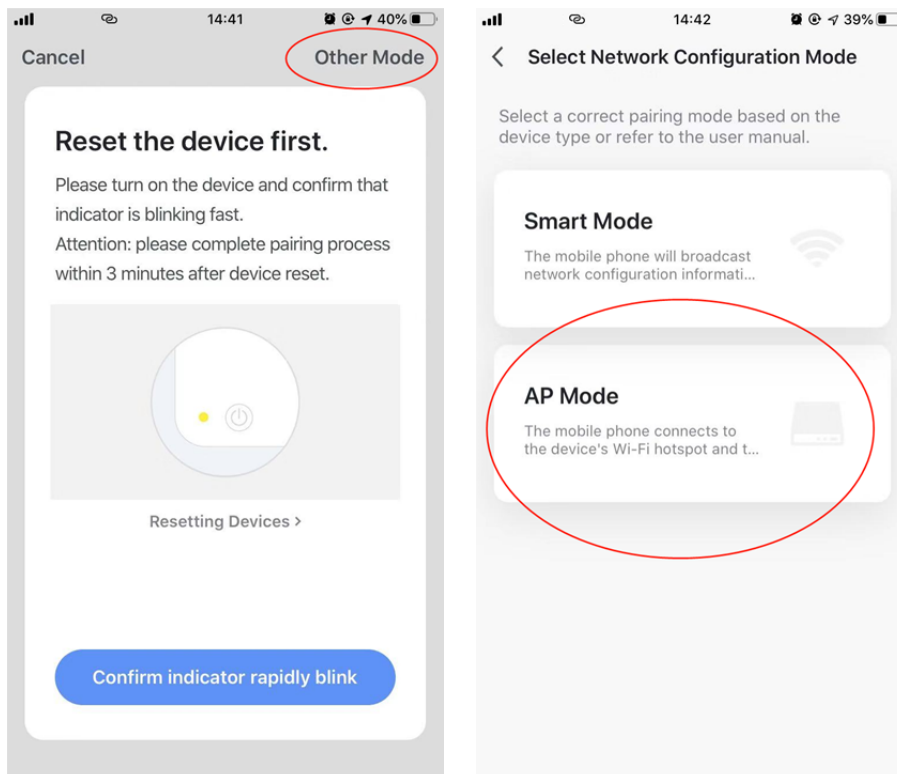
3.2.4 Tap on **【Done】** , you could see the interface of a device list as shown in the screenshot below.





3.3. What if connection failed?

When the connection failed, you could see the the App interface as shown in the screenshot below. Please try to configure network again or switch to AP mode.



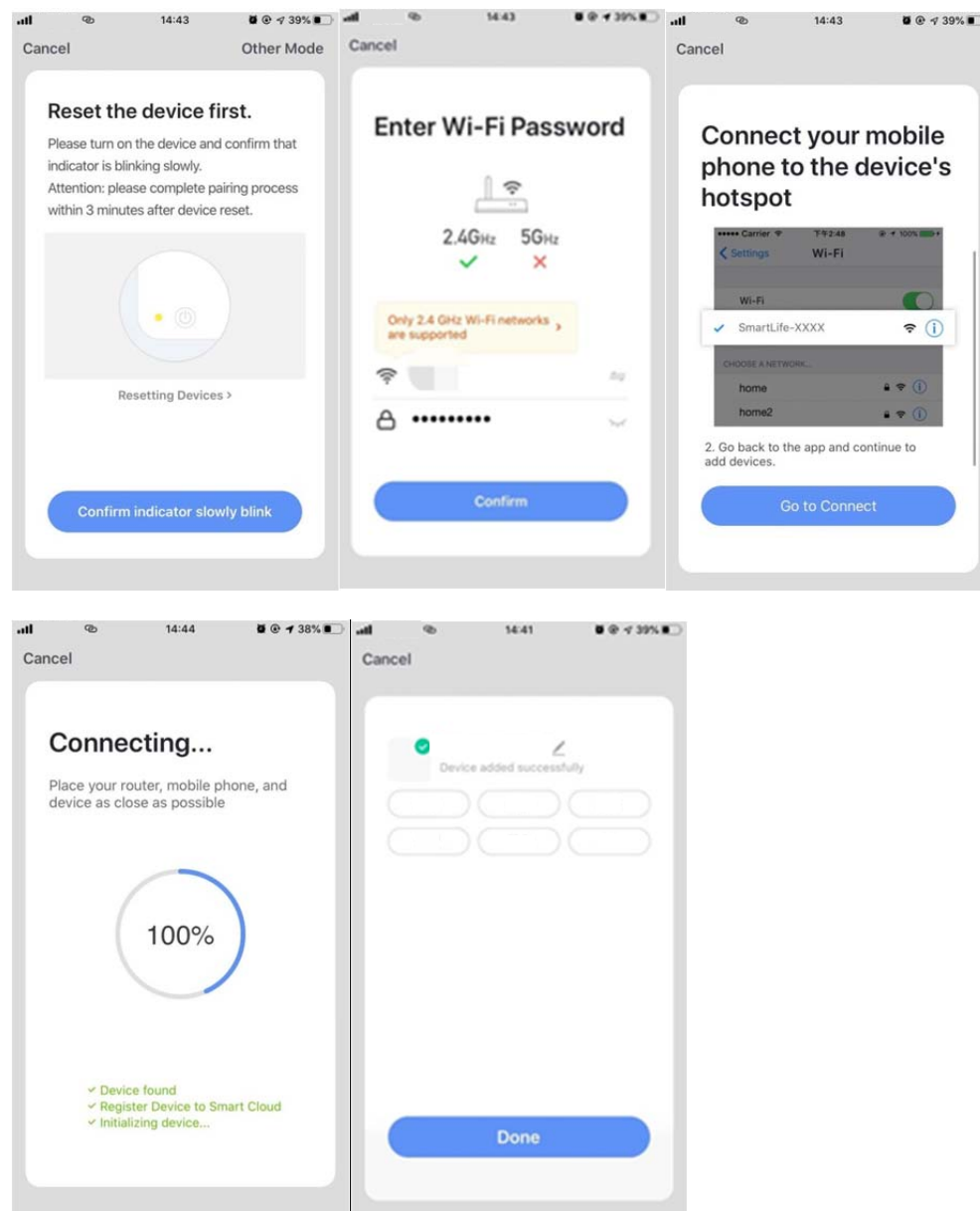
3.3.1. Continue to connect by switching other connection mode.

1. Tap on **【AP mode】** , configure network via AP mode with the following procedures.
2. Switch Air conditioner to AP mode: When it is under smart mode, long press reset-button for 5 seconds-buzzer sounds—the heating icon on device is slowly

flashing (approx. 1.5 times/s). It indicates the Air conditioner has entered into AP mode

3. Connect to device hotspot: Tap on **【Connect】** (open phone settings-WLAN), connect to the hotspot named “SmartLife-XXXX” (The name of WIFI may vary, depending on the actual product), then the network configuration starts as shown in the screenshot.

4. After successful network configuration, tap on “Done” and the device list interface appears.



3.3.2. Add device again from device list

1. Open App, tap on **【AP mode】** at upper right corner, connect to device via AP mode with the following procedures.

2. Select your own Wi-Fi network, type in your Wi-Fi router password, and tap on “Next”

3. Switch Air conditioner to AP mode: When it is under smart mode, long press

reset-button for 5 seconds-buzzer sounds— device’s indicator light is slowly flashing (approx. 1.5 times/s). It indicates the Air conditioner has entered into AP mode

4. Connect to device’s hotspot: Tap **【 Connect 】** (open phone settings-WLAN), connect to the hotspot named “SmartLife-XXXX” (The name of WIFI may vary, depending on the actual product), then the network configuration starts as shown in the screenshot.

5. After successful network configuration, tap on “Done” and the device list interface appears.

3.4. Device control

3.4.1 Select the device and enter the main control interface as shown in the screenshot below.

3.4.2 Tap on **【Switch】** to turn on/off Air conditioner

3.4.3 Tap on **【Mode】** to switch the working mode

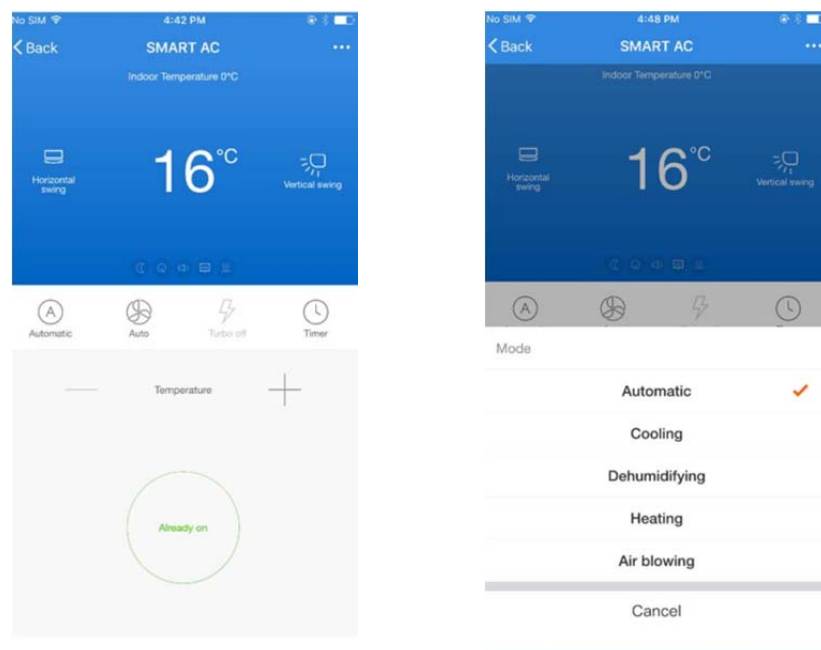
3.4.4 Tap on **【Speed】** to control the wind speed

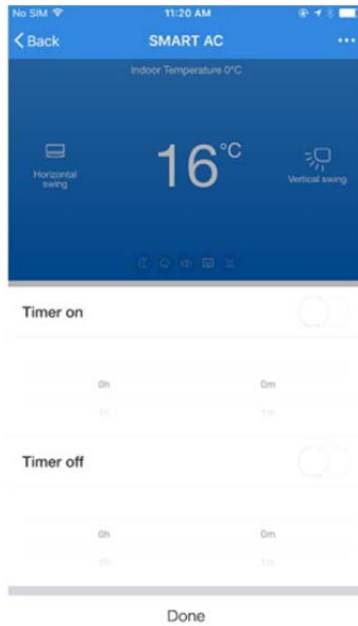
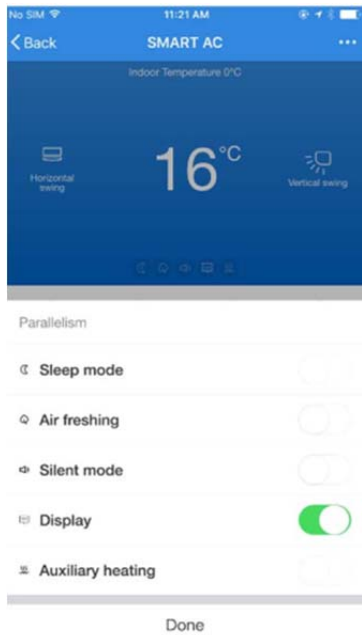
3.4.5 Tap on **【Left-right swing】** to turn on/off left-right swing function

3.4.6 Tap on **【Up-down swing】** to choose the wind direction such as swing, direction 1, direction 2, direction 3, direction 4, direction 5 and etc.

3.4.7 Tap on **【Multiple functions】** to select more functions such as sleep, air freshening, electrical heating. “Display” function is to turn on/off the display screen of air conditioner.

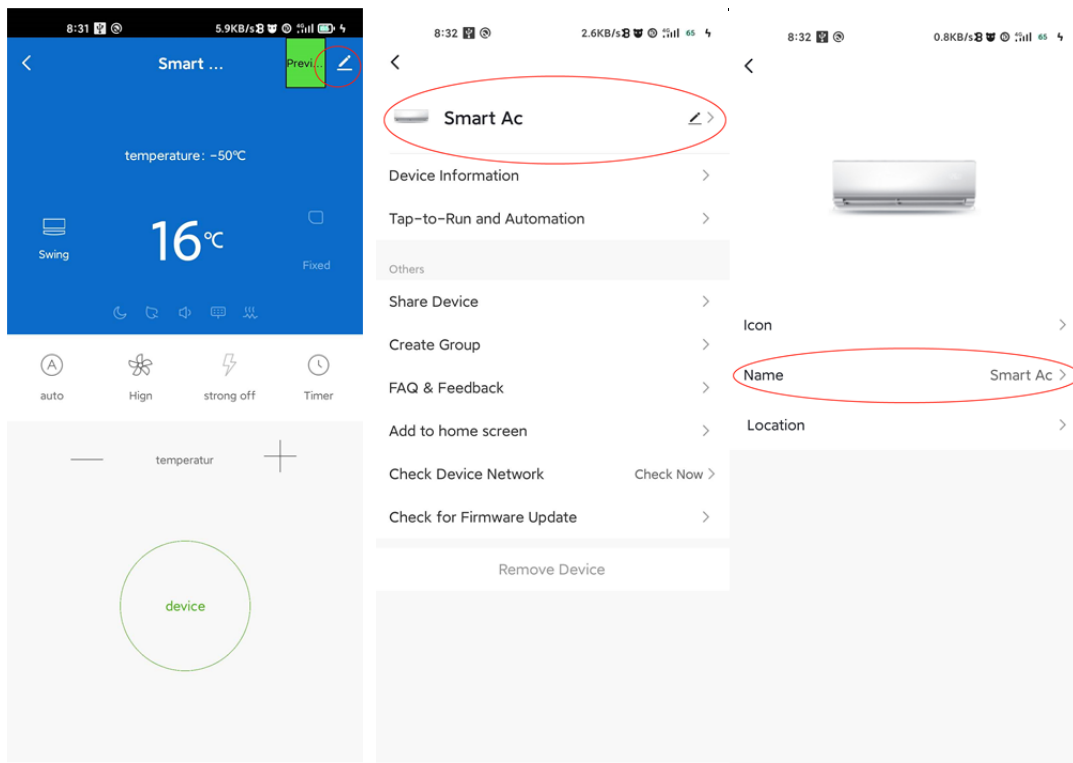
3.4.8 Tap on **【Timer】** to automatically turn Air conditioner on/off at a specific time.





3.5. Modify device name

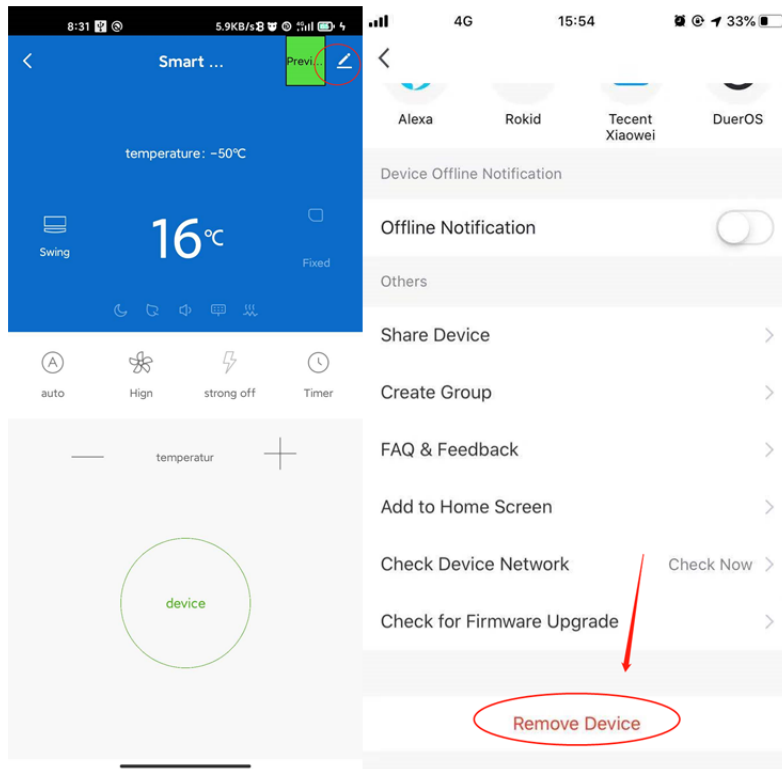
Tap on upper right corner of the main control interface, select **【Modify】** , type in the new device name on the pop-up dialog, and tap on **【Save】** .



3.6. Delete device or Reconnection

3.6.1 Tap on upper right corner of the main control interface, select **【Remove device】** , the dialog pops up to notify you whether to remove device. Tap on **【Confirm】** , device will be removed from the App and switched to reset status.

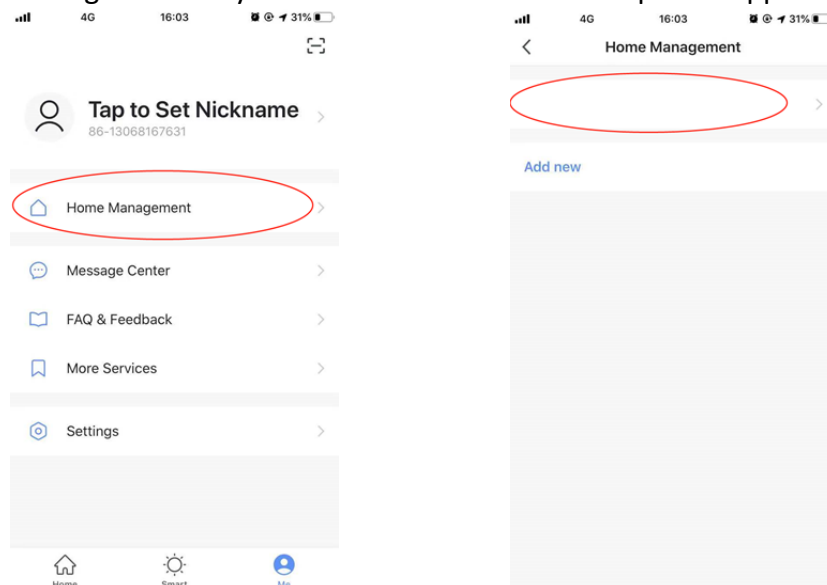
3.6.2 Long press the reset-button for 5s— buzzer sounds— the WIFI icon on device is quickly flashing, It will force an existing connection to be disconnected and needs to be re paired.

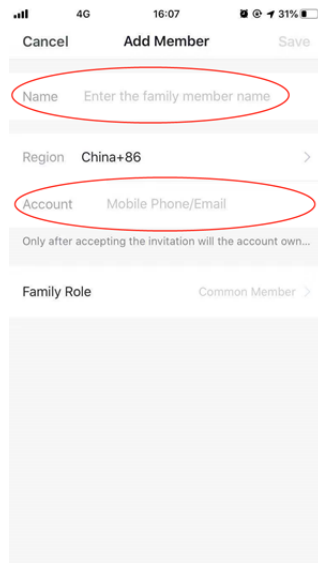
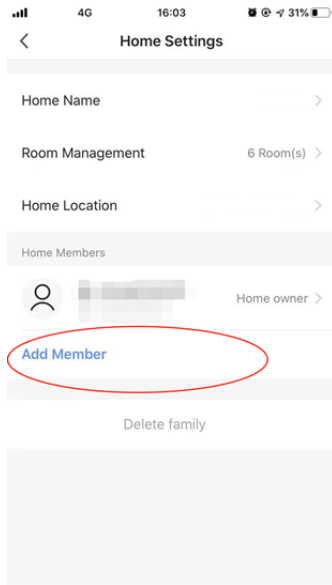


3.7. Share device

Tap on **【Home Management】** , select **【Home name】** - **【Add Member】** ,input the

in other's account number, tap on **【Confirm】** . The person would receive the sharing settings and easily control the device with smartphone App.

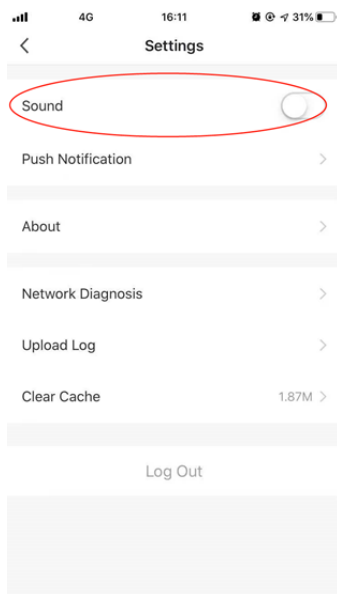




Remarks: If you sign in with a third-party account (Email address, Facebook and Twitter), you need to bind to your mobile number in order to share device with others.

3.8. Vibration and sound

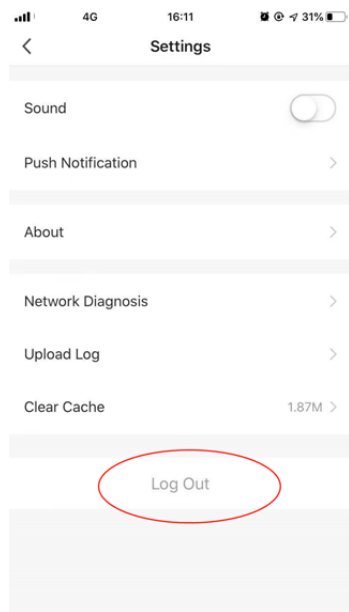
On **【Profile】** page, tap on **【Settings】** button at upper right corner. You could then turn/off vibration or sound, as shown in the screenshot below.



4. Profile

4.1. Logout

On **【Profile】** page, tap on the personal profile menu, you could then logout the current account.

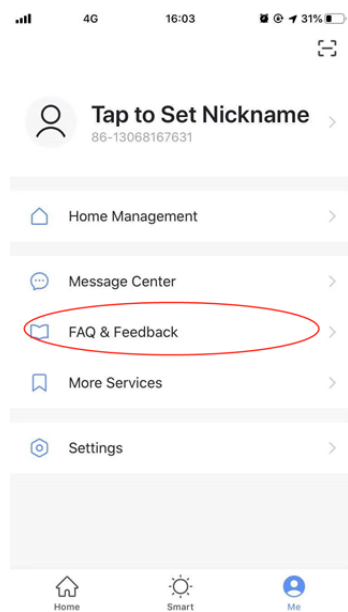


4.2. Modify profile information

On **【profile】** page, tap on the personal profile menu to modify the profile picture, name and other account information.

4.3. FAQ&Feedback

On **【profile】** page, tap on **【Faq&qFeedback】** menu to submit your feedback.



5.WIFI Attentions

5.1 Important notifications

To prevent unnecessary harm, please keep in mind of the following notifications
Please don't use Wi-Fi where the wireless device is not allowed, such as airport, medical places and etc.

Please don't turn on your smartphone in dangerous places, such as gas station, fuel or chemicals manufactures, and etc.

Please don't use mismatched devices.

Please find a qualified repair man to fix the Wi-Fi.

Please refer to the user manual for the detailed connection methods, please don't randomly use mismatched devices.

5.2 Notifications:

5.2.1 The App control quality is affected by your smartphone, Wi-Fi network, distance with router, and internet status. Sometime it is not very smooth. It has nothing to do with air conditioner itself;

5.2.2 If you find it failed to control with your smartphone, please check your internet status at first, then check whether it is successfully connected with air conditioner; If these circumstances are alright, please delete the device first on your App and start the procedures all over again from the step 3.2.

5.2.3 If you still cannot solve the issues with the methods above, please control the Air conditioner with your normal remoter and then request for after-sale service.



OMEGA
ENVIRONMENTAL
TECHNOLOGIES LLC.

17702 Mitchell North, #101
Irvine, CA. 92614 .USA
Tel: 714 795 2830
Fax: 714 966 1646
info@otecomega.com
www.otecomega.com

OTECTM
AIR CONDITIONING

Showroom & Technology Center
11380 Interchange Circle North
Miramar, FL 33025 .USA
Tel: 305 901 1270
Fax: 954 212 8280
info@otecomega.com
www.otecomega.com

IEWH(CHH)I3A-TM1C0622