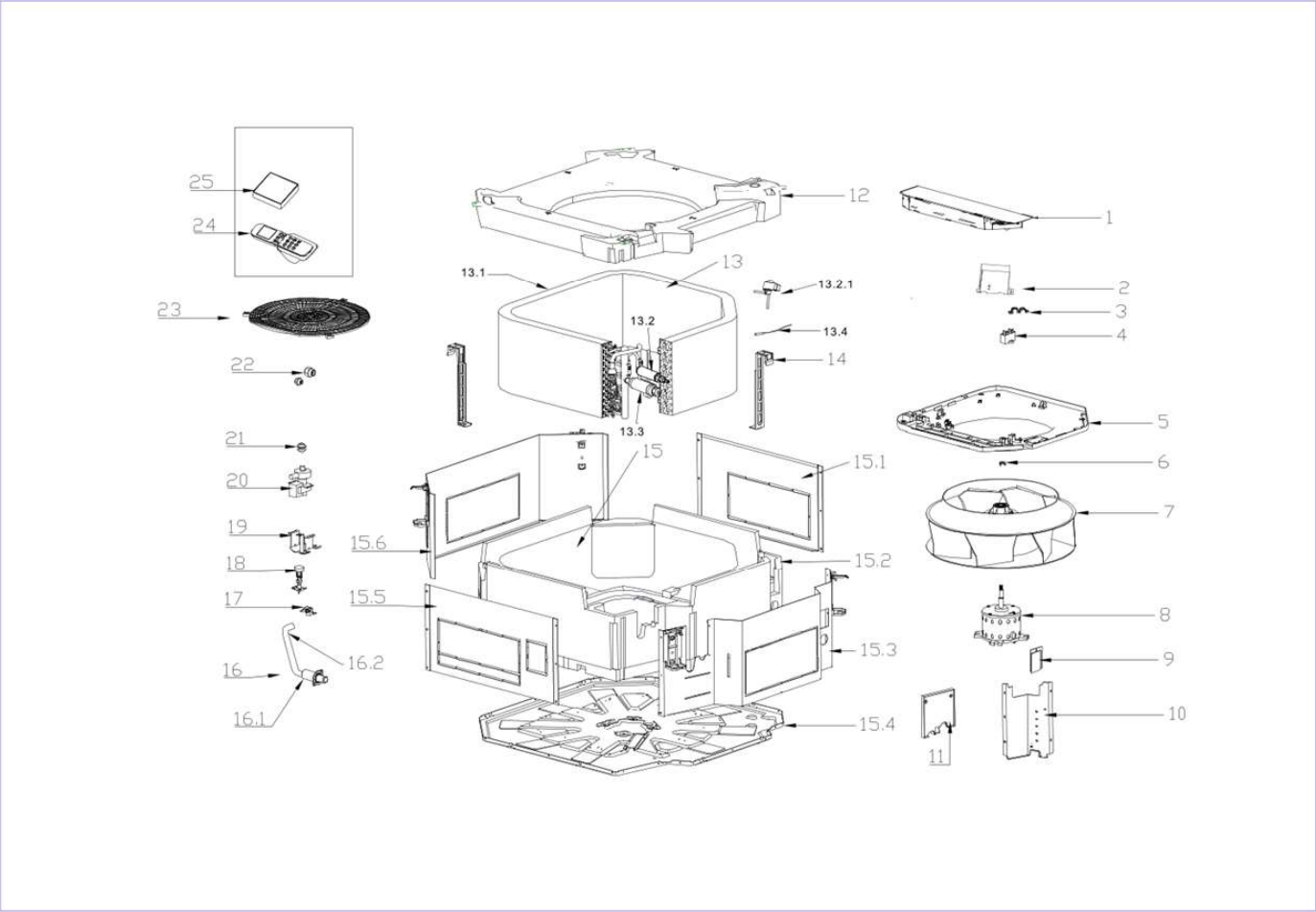


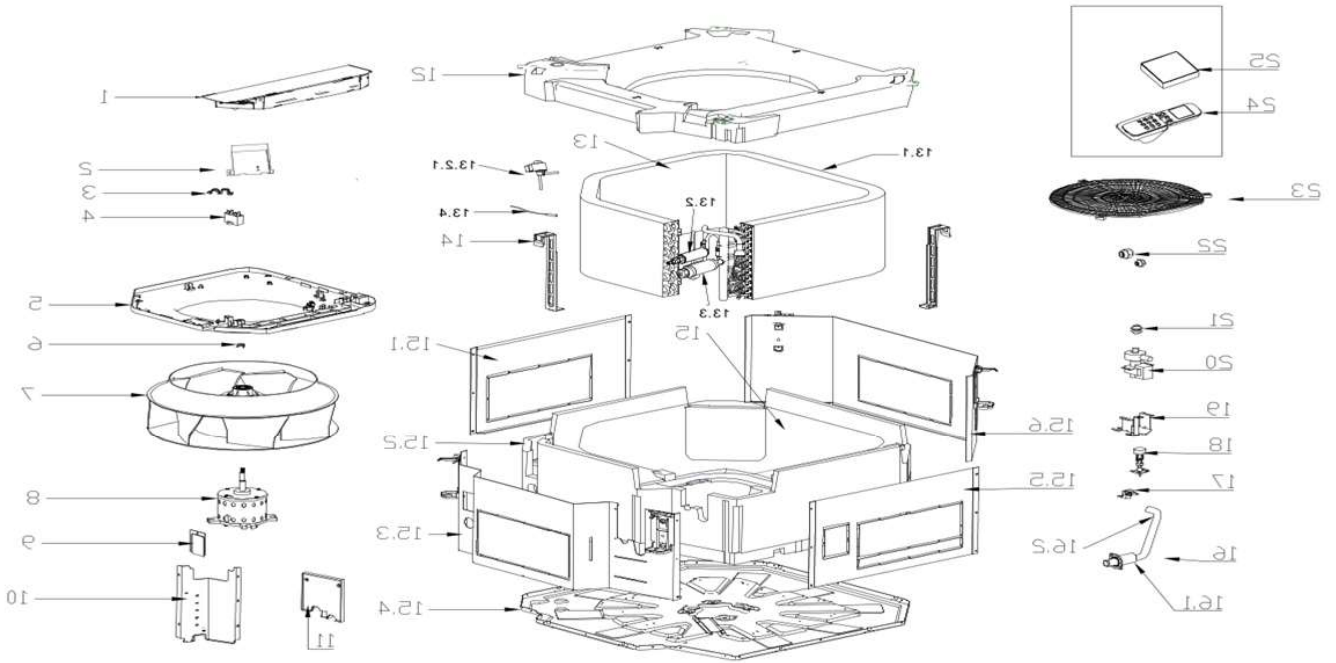
Exploded Views and Parts List.
Indoor Unit Model: IECS018J3A-DWG053



Model: IECS018J3A-DWG053

No.	OMEGA Model	Part No.	Description	Qty.
1	IECS018J3A-DWG053	17222500A04537	E-part box assembly	1
1.1	IECS018J3A-DWG053	17122500A02827	Indoor unit main control board	1
1.2	IECS018J3A-DWG053	12226000000128	E-part box ass'y	1
1.3	IECS018J3A-DWG053	12222500001932	Supporting board assembly of wire joint	1
1.3	IECS018J3A-DWG053	17400401000197	Wire joint	1
1.3	IECS018J3A-DWG053	16000110A11183	Wire terminal label	1
2	IECS018J3A-DWG053	12226200000975	Capacitor box	1
3	IECS018J3A-DWG053	12200203000041	Clip	1
4	IECS018J3A-DWG053	17400101000028	Fan motor capacitor	1
5	IECS018J3A-DWG053	12126000000114	Ring ass'y	1
6	IECS018J3A-DWG053	12222500000126	Fan clip	1
7	IECS018J3A-DWG053	12100103000149	centrifuge fan	1
8	IECS018J3A-DWG053	11002012000792	Single phase asynchronous motor	1
9	IECS018J3A-DWG053	12222500000067	Cover subassembly	1
10	IECS018J3A-DWG053	12226000000118	Evaporator connection board	1
11	IECS018J3A-DWG053	12126000000332	Sealed board ass'y	1
12	IECS018J3A-DWG053	12826000000210	Water collection foam assembly	1
13	IECS018J3A-DWG053	15822500002100	Evaporator assembly	1
13.1	IECS018J3A-DWG053	15826000000209	Evaporator	1
13.2	IECS018J3A-DWG053	15422500001096	Evaporator input pipe assembly	1
13.3	IECS018J3A-DWG053	15122500003086	Evaporator output pipe assembly	1
14	IECS018J3A-DWG053	12226000000112	Evaporator fixing hanger	2
15	IECS018J3A-DWG053	12226000000696	Base assembly	1
15.1	IECS018J3A-DWG053	12226000000092	Board ass'y	1
15.2	IECS018J3A-DWG053	12826000000018	Foam	1
15.4	IECS018J3A-DWG053	12226000000509	Base	1
15.5	IECS018J3A-DWG053	12226000000091	Board ass'y	1
15.6	IECS018J3A-DWG053	12226000000093	Board ass'y	1
16	IECS018J3A-DWG053	12626000000011	drain pipe ass'y	1
16.1	IECS018J3A-DWG053	12100509000068	Water pipe	1
16.2	IECS018J3A-DWG053	12626000000009	Drainpipe	1
17	IECS018J3A-DWG053	12126000000043	Bracket of water level sensor	1
18	IECS018J3A-DWG053	17400511000039	Water level switch	1
19	IECS018J3A-DWG053	12226000000115	Water Pump installation bracket ass'y	1
20	IECS018J3A-DWG053	17400802000173	Drain pump	1
21	IECS018J3A-DWG053	12600401001935	Rubber washer	3
22	IECS018J3A-DWG053	15500406000191	Brass nut	1
22	IECS018J3A-DWG053	15500406000230	Brass nut	1
23	IECS018J3A-DWG053	12126000000041	Fan fence	1
24	IECS018J3A-DWG053	17317000A58918	Remote controller	1

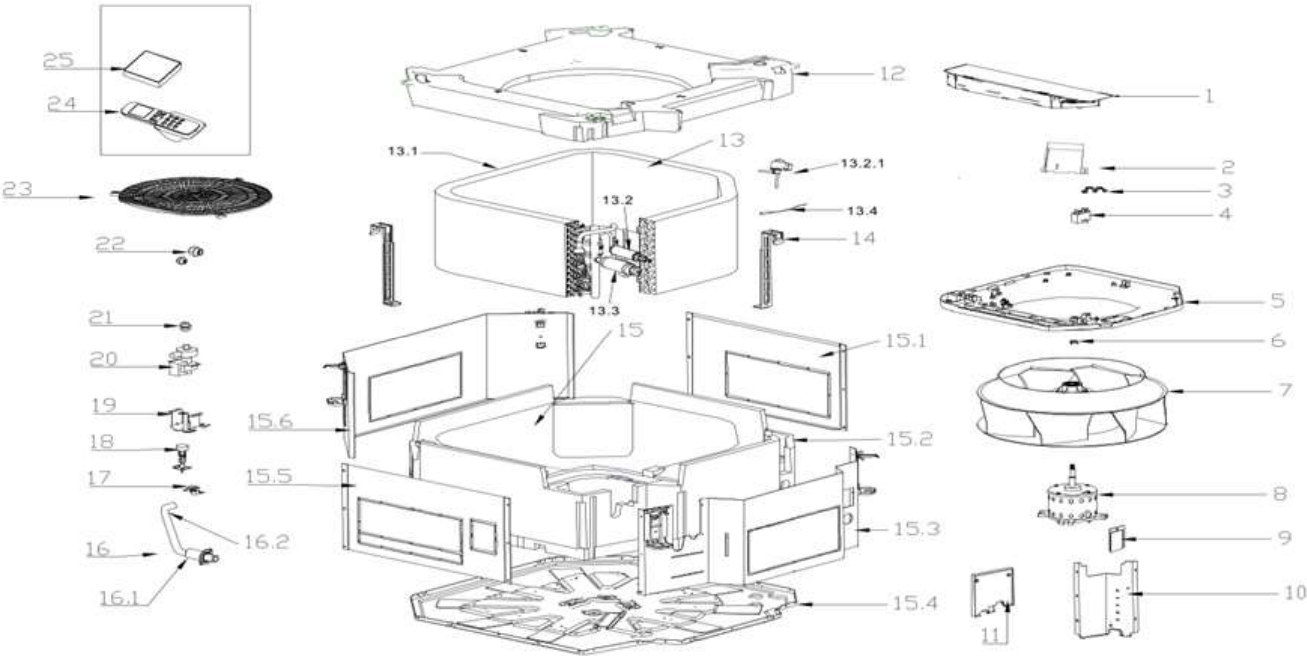
Indoor Unit Model: IECS024J3A-DWG071



Model: IECS024J3A-DWG071

No.	OMEGA Model	Part No.	Description	Qty.
1	IECS024J3A-DWG071	17222500A04538	E-part box assembly	1
1.1	IECS024J3A-DWG071	17122500A02828	Indoor unit main control board	1
1.2	IECS024J3A-DWG071	12226000000128	E-part box ass'y	1
1.3	IECS024J3A-DWG071	16000110A11183	Wire terminal label	1
1.3	IECS024J3A-DWG071	17400401000197	Wire joint	1
1.3	IECS024J3A-DWG071	12222500001932	Supportting board assembly of wire joint	1
2	IECS024J3A-DWG071	12226200000975	Capacitor box	1
3	IECS024J3A-DWG071	12200203000041	Clip	1
4	IECS024J3A-DWG071	17400101000028	Fan motor capacitor	1
5	IECS024J3A-DWG071	12126000000114	Ring ass'y	1
6	IECS024J3A-DWG071	12222500000126	Fan clip	1
7	IECS024J3A-DWG071	12100103000149	centrifuge fan	1
8	IECS024J3A-DWG071	11002012003669	Single phase asynchronous motor	1
9	IECS024J3A-DWG071	12222500000067	Cover subassembly	1
10	IECS024J3A-DWG071	12226000000118	Evaporator connection board	1
11	IECS024J3A-DWG071	12126000000332	Sealed board ass'y	1
12	IECS024J3A-DWG071	12826000000210	Water collection foam assembly	1
13	IECS024J3A-DWG071	15822500002099	Evaporator assembly	1
13.1	IECS024J3A-DWG071	15826000000209	Evaporator	1
13.2	IECS024J3A-DWG071	15422500001096	Evaporator input pipe assembly	1
13.3	IECS024J3A-DWG071	15122500003084	Evaporator output pipe assembly	1
14	IECS024J3A-DWG071	12226000000112	Evaporator fixing hanger	2
15	IECS024J3A-DWG071	12226000000696	Base assembly	1
15.1	IECS024J3A-DWG071	12226000000092	Board ass'y	1
15.2	IECS024J3A-DWG071	12826000000018	Foam	1
15.4	IECS024J3A-DWG071	12226000000509	Base	1
15.5	IECS024J3A-DWG071	12226000000091	Board ass'y	1
15.6	IECS024J3A-DWG071	12226000000093	Board ass'y	1
16	IECS024J3A-DWG071	12626000000011	drain pipe ass'y	1
16.1	IECS024J3A-DWG071	12100509000068	Water pipe	1
16.2	IECS024J3A-DWG071	12626000000009	Drainpipe	1
17	IECS024J3A-DWG071	12126000000043	Bracket of water level sensor	1
18	IECS024J3A-DWG071	17400511000039	Water level switch	1
19	IECS024J3A-DWG071	12226000000115	Water Pump installation bracket ass'y	1
20	IECS024J3A-DWG071	17400802000173	Drain pump	1
21	IECS024J3A-DWG071	12600401001935	Rubber washer	3
22	IECS024J3A-DWG071	15500406000190	Brass nut	1
22	IECS024J3A-DWG071	15500406000230	Brass nut	1
23	IECS024J3A-DWG071	12126000000041	Fan fence	1
24	IECS024J3A-DWG071	17317000A58918	Remote controller	1

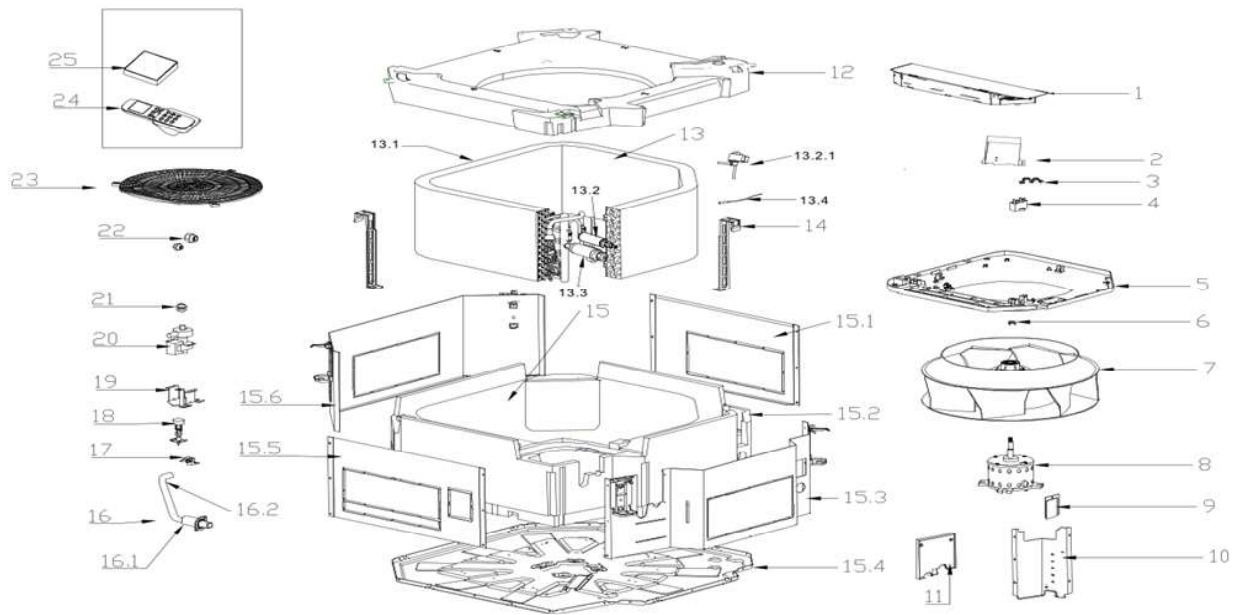
Indoor Unit Model: IECS036J3A-DWG105



Model: IECS 036J3A-DWG105

No.	OMEGA Model	Part No.	Description	Qty.
1	IECS036J3A-DWG105	17226000A06110	E-part box assembly	1
1.1	IECS036J3A-DWG105	17122500A02787	Indoor unit main control board	1
1.2	IECS036J3A-DWG105	12226000000128	E-part box ass'y	1
1.3	IECS036J3A-DWG105	17400401000189	Wire terminal	1
2	IECS036J3A-DWG105	12226200000975	Capacitor box	1
3	IECS036J3A-DWG105	12200203000041	Clip	1
4	IECS036J3A-DWG105	17400101000019	Fan motor capacitor	1
5	IECS036J3A-DWG105	12126000000114	Ring ass'y	1
6	IECS036J3A-DWG105	12222500000126	Fan clip	1
7	IECS036J3A-DWG105	12100103000142	centrifuge fan	1
8	IECS036J3A-DWG105	11002012000412	Single phase asynchronous motor	1
9	IECS036J3A-DWG105	12222500000067	Cover subassembly	1
10	IECS036J3A-DWG105	12226000000121	Evaporator connection board	1
11	IECS036J3A-DWG105	12126000000332	Sealed board ass'y	1
12	IECS036J3A-DWG105	12826000000150	Drain pan foam part	1
13	IECS036J3A-DWG105	15826000002752	Evaporator assembly	1
13.1	IECS036J3A-DWG105	15826000002393	Evaporator	1
13.2	IECS036J3A-DWG105	15426000002036	Evaporator input pipe assembly	1
13.3	IECS036J3A-DWG105	15126000003366	Evaporator output pipe assembly	1
13.4	IECS036J3A-DWG105	11201007000181	Pipe temperature sensor assemblies	1
14	IECS036J3A-DWG105	12226000004238	Evaporator fixing hanger	3
15	IECS036J3A-DWG105	12226000000698	Base assembly	1
15.1	IECS036J3A-DWG105	12226000000090	Board ass'y	1
15.2	IECS036J3A-DWG105	12826000000014	Foam	1
15.3	IECS036J3A-DWG105	12226000000105	Clapboard ass'y	1
15.4	IECS036J3A-DWG105	12226000000504	Chassis welded parts	1
15.5	IECS036J3A-DWG105	12226000000095	Board II ass'y	1
15.6	IECS036J3A-DWG105	12226000000106	Coaming assembly	1
16	IECS036J3A-DWG105	12626000000010	drain pipe ass'y	1
16.1	IECS036J3A-DWG105	12100509000068	Water pipe	1
16.2	IECS036J3A-DWG105	12626000000008	Drainpipe	1
17	IECS036J3A-DWG105	12126000000043	Bracket of water level sensor	1
18	IECS036J3A-DWG105	17400511000039	Water level switch	1
19	IECS036J3A-DWG105	12226000000115	Water Pump installation bracket ass'y	1
20	IECS036J3A-DWG105	17400802000173	Drain pump	1
21	IECS036J3A-DWG105	12600401001935	Rubber washer	3
22	IECS036J3A-DWG105	15500406000190	Brass nut	1
22	IECS036J3A-DWG105	15500406000210	Brass nut	1
23	IECS036J3A-DWG105	12126000000041	Fan fence	1
24	IECS036J3A-DWG105	17317000A58918	Remote controller	1

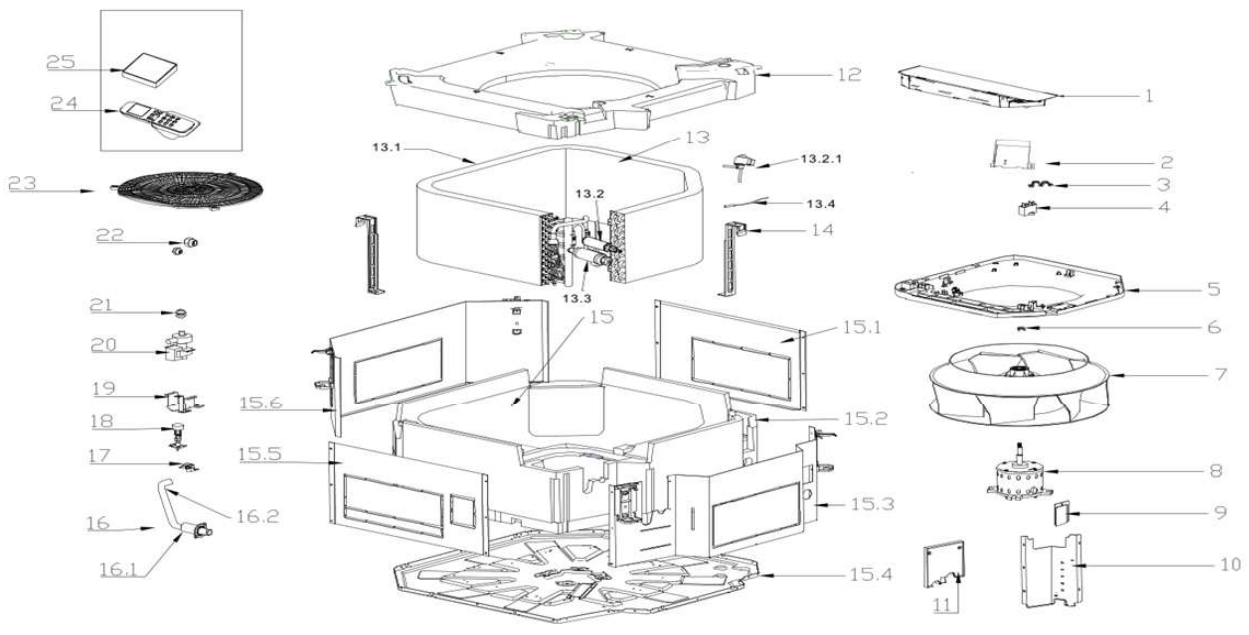
Indoor Unit Model: IECS048J3A-DWG140



Model: IECS048J3A-DWG140

No.	OMEGA Model	Part No.	Description	Qty.
1	IECS048J3A-DWG140	17226000A06110	E-part box assembly	1
1.1	IECS048J3A-DWG140	17122500A02787	Indoor unit main control board	1
1.2	IECS048J3A-DWG140	12226000000128	E-part box ass'y	1
1.3	IECS048J3A-DWG140	17400401000189	Wire terminal	1
2	IECS048J3A-DWG140	12226200000975	Capacitor box	1
3	IECS048J3A-DWG140	12200203000041	Clip	1
4	IECS048J3A-DWG140	17400101000040	Fan motor capacitor	1
5	IECS048J3A-DWG140	12126000000114	Ring ass'y	1
6	IECS048J3A-DWG140	12222500000126	Fan clip	1
7	IECS048J3A-DWG140	12100103000142	centrifuge fan	1
8	IECS048J3A-DWG140	11002012036235	Single phase asynchronous motor	1
9	IECS048J3A-DWG140	12222500000067	Cover subassembly	1
10	IECS048J3A-DWG140	12226000000120	Evaporator connection board	1
11	IECS048J3A-DWG140	12126000000332	Sealed board ass'y	1
12	IECS048J3A-DWG140	12826000000150	Drain pan foam part	1
13	IECS048J3A-DWG140	15822500002239	Evaporator assembly	1
13.1	IECS048J3A-DWG140	15826000000218	Evaporator	1
13.2	IECS048J3A-DWG140	15422500001116	Evaporator input pipe assembly	1
13.3	IECS048J3A-DWG140	15126000001325	Evaporator output pipe ass'y	1
13.4	IECS048J3A-DWG140	11201007000181	Pipe temperature sensor assemblies	1
14	IECS048J3A-DWG140	12226000000111	Evaporator fixing hanger	2
15	IECS048J3A-DWG140	12226000000698	Base assembly	1
15.1	IECS048J3A-DWG140	12226000000090	Board ass'y	1
15.2	IECS048J3A-DWG140	12826000000014	Foam	1
15.3	IECS048J3A-DWG140	12226000000105	Clapboard ass'y	1
15.4	IECS048J3A-DWG140	12226000000504	Chassis welded parts	1
15.5	IECS048J3A-DWG140	12226000000095	Board II ass'y	1
15.6	IECS048J3A-DWG140	12226000000106	Coaming assembly	1
16	IECS048J3A-DWG140	12626000000010	drain pipe ass'y	1
16.1	IECS048J3A-DWG140	12100509000068	Water pipe	1
16.2	IECS048J3A-DWG140	12626000000008	Drainpipe	1
17	IECS048J3A-DWG140	12126000000043	Bracket of water level sensor	1
18	IECS048J3A-DWG140	17400511000039	Water level switch	1
19	IECS048J3A-DWG140	12226000000115	Water Pump installation bracket ass'y	1
20	IECS048J3A-DWG140	17400802000173	Drain pump	1
21	IECS048J3A-DWG140	12600401001935	Rubber washer	3
22	IECS048J3A-DWG140	15500406000190	Brass nut	1
22	IECS048J3A-DWG140	15500406000210	Brass nut	1
23	IECS048J3A-DWG140	12126000000041	Fan fence	1
24	IECS048J3A-DWG140	17317000A58918	Remote controller	1

Indoor Unit Model: IECS060J3A-DWG160



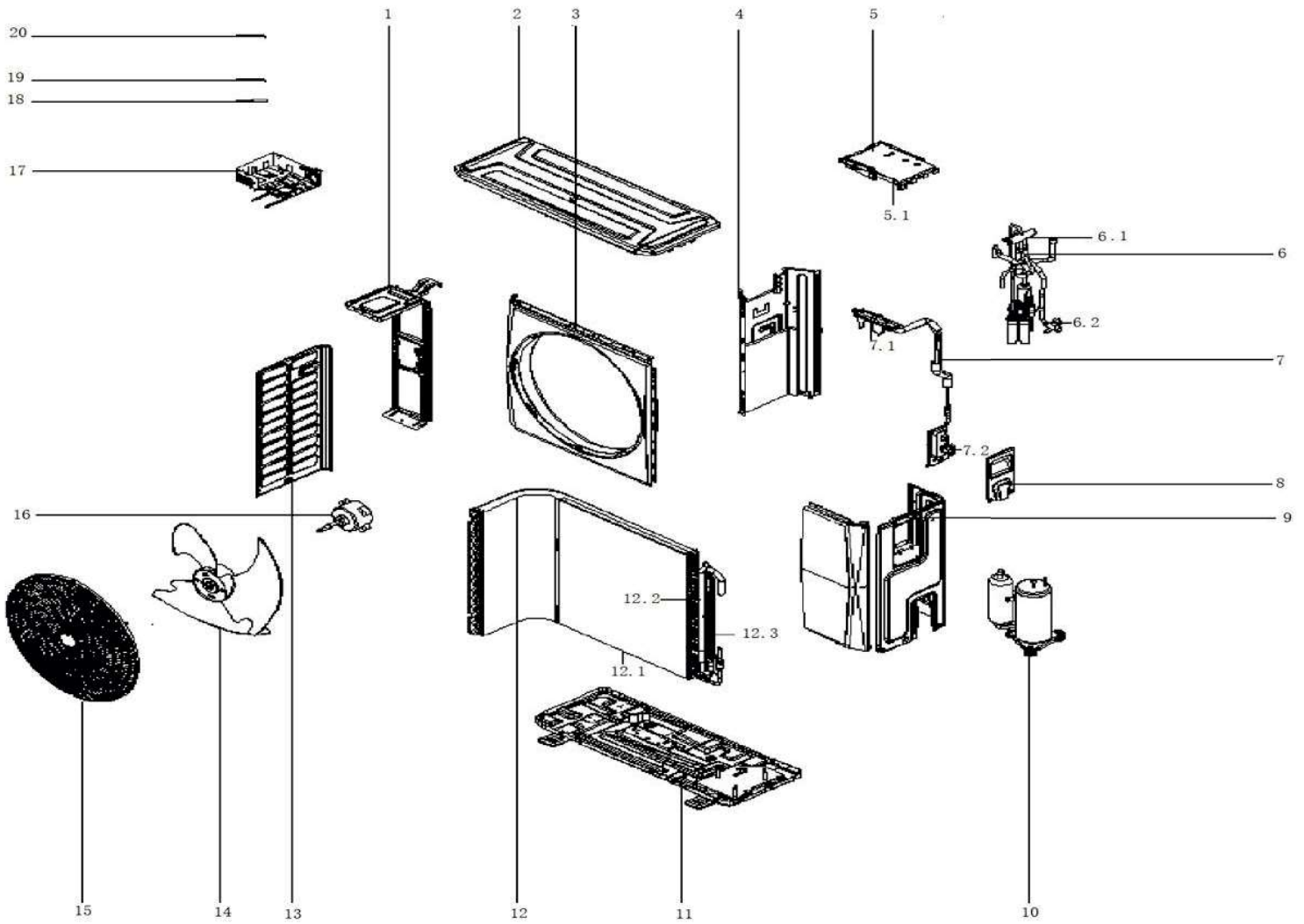
Model: IECS060J3A-DWG160

No.	OMEGA Model	Part No.	Description	Qty.
1	IECS060J3A-DWG160	17226000A06110	E-part box assembly	1
1.1	IECS060J3A-DWG160	17122500A02787	Indoor unit main control board	1
1.2	IECS060J3A-DWG160	12226000000128	E-part box ass'y	1
1.3	IECS060J3A-DWG160	17400401000189	Wire terminal	1
2	IECS060J3A-DWG160	122262000000975	Capacitor box	1
3	IECS060J3A-DWG160	12200203000041	Clip	1
4	IECS060J3A-DWG160	17400101000040	Fan motor capacitor	1
5	IECS060J3A-DWG160	12126000000114	Ring ass'y	1
6	IECS060J3A-DWG160	12222500000126	Fan clip	1
7	IECS060J3A-DWG160	12100103000142	centrifuge fan	1
8	IECS060J3A-DWG160	11002012036235	Single phase asynchronous motor	1
9	IECS060J3A-DWG160	122225000000067	Cover subassembly	1
10	IECS060J3A-DWG160	12226000000120	Evaporator connection board	1
11	IECS060J3A-DWG160	12126000000332	Sealed board ass'y	1
12	IECS060J3A-DWG160	12826000000150	Drain pan foam part	1
13	IECS060J3A-DWG160	15822500002239	Evaporator assembly	1
13.1	IECS060J3A-DWG160	15826000000218	Evaporator	1
13.2	IECS060J3A-DWG160	15422500001116	Evaporator input pipe assembly	1
13.3	IECS060J3A-DWG160	15126000001325	Evaporator output pipe ass'y	1
13.4	IECS060J3A-DWG160	11201007000181	Pipe temperature sensor assemblies	1
14	IECS060J3A-DWG160	12226000000111	Evaporator fixing hanger	2
15	IECS060J3A-DWG160	12226000000698	Base assembly	1
15.1	IECS060J3A-DWG160	12226000000090	Board ass'y	1
15.2	IECS060J3A-DWG160	12826000000014	Foam	1
15.3	IECS060J3A-DWG160	12226000000105	Clapboard ass'y	1
15.4	IECS060J3A-DWG160	12226000000504	Chassis welded parts	1
15.5	IECS060J3A-DWG160	12226000000095	Board II ass'y	1
15.6	IECS060J3A-DWG160	12226000000106	Coaming assembly	1
16	IECS060J3A-DWG160	12626000000010	drain pipe ass'y	1
16.1	IECS060J3A-DWG160	12100509000068	Water pipe	1
16.2	IECS060J3A-DWG160	12626000000008	Drainpipe	1
17	IECS060J3A-DWG160	12126000000043	Bracket of water level sensor	1
18	IECS060J3A-DWG160	17400511000039	Water level switch	1
19	IECS060J3A-DWG160	12226000000115	Water Pump installation bracket ass'y	1
20	IECS060J3A-DWG160	17400802000173	Drain pump	1
21	IECS060J3A-DWG160	12600401001935	Rubber washer	3
22	IECS060J3A-DWG160	15500406000190	Brass nut	1
22	IECS060J3A-DWG160	15500406000210	Brass nut	1
23	IECS060J3A-DWG160	12126000000041	Fan fence	1
24	IECS060J3A-DWG160	17317000A58918	Remote controller	1

Exploded Views and Parts List.

Outdoor Unit Model:

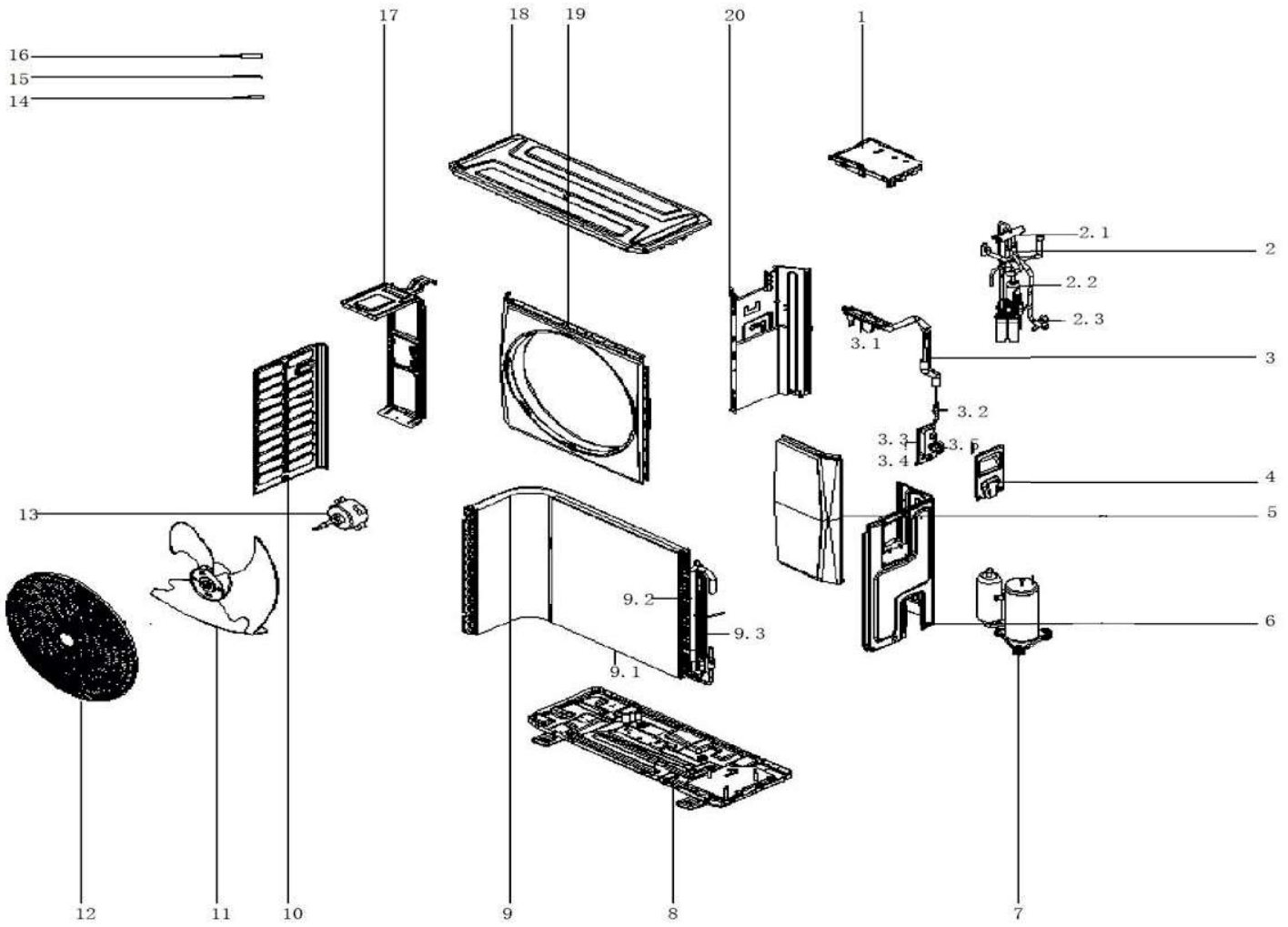
ICHD018J0A-DMG053



Model: ICHD018J0A-DMG053

EX_ID	Spare Parts Code	Part Name(EN)	Qty.	Remark 2	Drawing No
1	12223000015529	Motor holder assembly	1		KFR-51W/BP3N1-B01.9E
2	12227000014851	Top cover assembly	1		KFR-35W/BP3N1-B01.4A
3	12223000014492	Front panel assembly	1		KFR-35W/BP2N1-B01(Z).1
4	12222000002230	Partition board	1		B01.BJ-9
5	17123000006168	Outdoor main control board assembly	1		V-KOK51-DMD-A-2[KSN140D21UFZ_RX24T_PSS20S92F6]
5.1	12123000001143	Electronic control box	1		WC01,DKH,SL-1(Z)
6	15423000005480	Four-way valve assembly	1		KFR-51W/BP2N1-B02(TR).ZL.2
6.1	15500216000026	4-way Valve	1		STF-02BN1(VHR)
6.2	15500204000047	Gas valve	1		DYF-B23N1
7	15423000005059	High pressure valve assembly	1		CFAN-X51TR.ZL.1
7.1	15427000002762	Heat sink assembly	1		KFR-51W/BP3N1-B10T2(TR).ZL.2.1
7.2	15500208000028	Liquid valve	1		GYF-A28N
8	12123000002361	Large handle assembly	1		KFR-26W/BP3N1-A01.5A(Z)
9	12223000014489	Side panel assembly	1		KFR-35W/BP2N1-B01(Z).2A
10	11103020003919	DC Inverter Rotary Compressor	1		KSN140D21UFZ
11	12223000011665	Base assembly	1		B01.BJ.1C
12	15823000006266	B unit condenser assembly	1		KFR-51W/BP2N1-B02(TR).ZL.1B
12.1	15823000006271	Condenser A	1		KFR-51W/BP2N1-B02(TR).ZL.1.1B
12.2	15123000011700	B condenser input pipe assembly	1		KFR-51W/BP2N1-B02(TR).ZL.1.2
12.3	15423000004973	Condenser output pipe assembly	1		KFR-51W/BP2N1-B02(TR).ZL.1.3
13	12223000014490	Column	1		KFR-26W/BP3N1-A01.6(Z)
14	12100105000051	Axial flow fan	1		ZL-427*139*8-3KN
15	12123000001922	Wind nets	1		WB01.SL-1(Z)
16	11002015000325	Brushless DC Motor	1		ZKFN-56-8-1
17	12223000012499	Electric control box welding assembly	1		KFR-26W/BP2N1-A09.D.13.DK1.1A(Z)
18	11201007002020	Room Temperature Sensor	1	T4: Ambient temperatur e sensor	CGQ-WD/SW4100-L550-SMP2-P450-HT1.0
19	11201007000136	Pipe Temperature Sensor	1	T3: Heat exchanger outlet temperatur e sensor	CGQ-WD/GW4100-L850-SMP3B-P800
20	11201007000005	Discharge Temperature Sensor	1	TP: Discharge emperatur e sensor	CGQ-WD/PQ3950-L380-SMP2R-G340

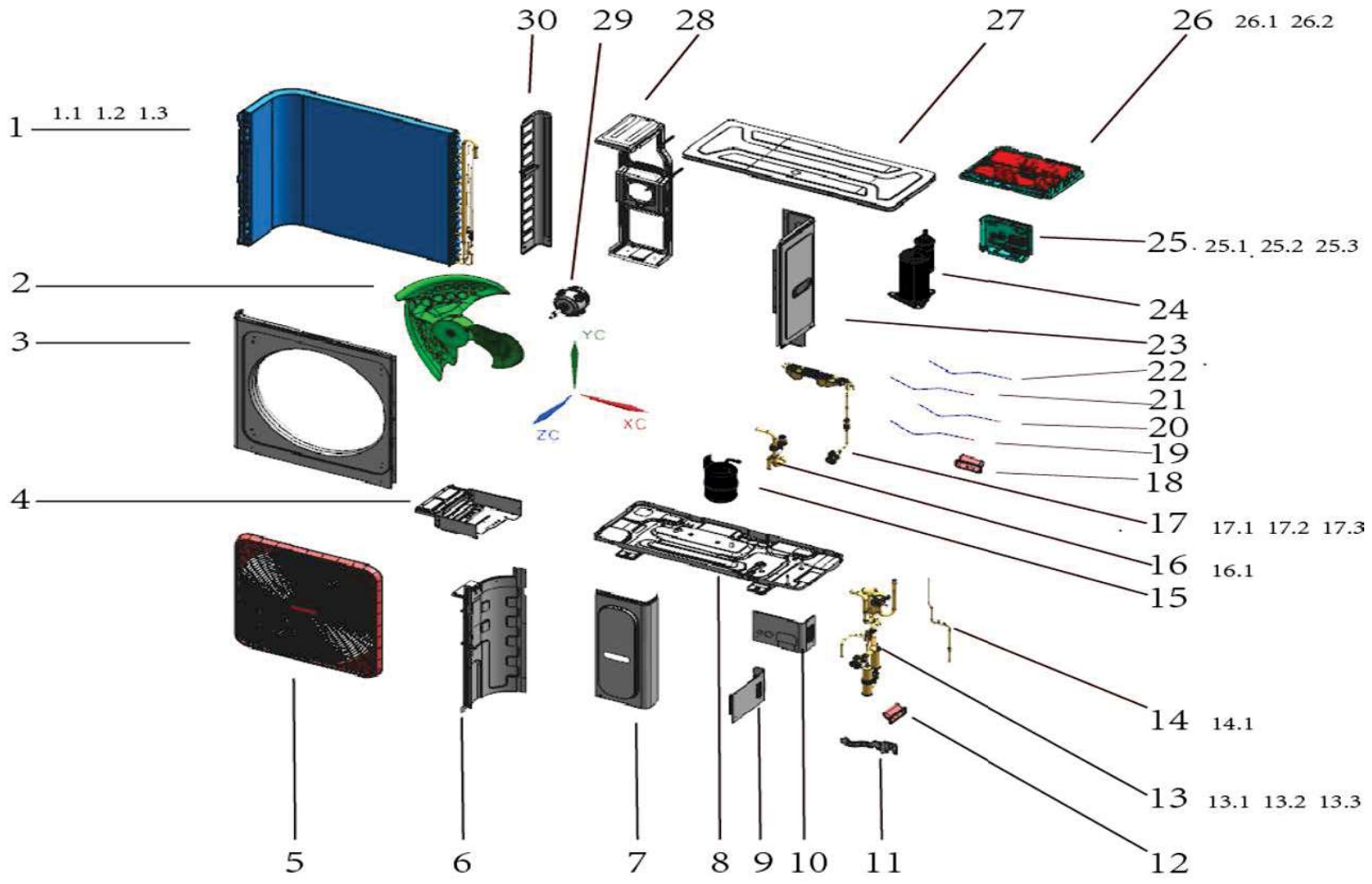
**Outdoor Unit Model:
ICHD024J0A-DMG071**



Model: ICHD024J0A-DMG071

EX_ID	Spare Parts Code	Part Name(EN)	Qty.	Remark2	Drawing No
1	17123000006166	Outdoor main control board assembly	1		V-KOK72-DMD-A-2[KTM240D57UMT_RX24T_PSS30S92F6]
2	15423000005078	Four-way valve assembly	1		CFAN-X72TR.ZL.3
2.1	15500216000026	4-way Valve	1		STF-02BN1(VHR)
2.2	15500506000144	Muffler	1		XSQ-10A
2.3	15500204000025	Gas valve	1		DYF-C15N1
3	15423000A01255	High pressure valve assembly	1		KFR-72W/BP2N1-C02(TR).ZL.2(CLIVET)
3.1	15427000002759	Heat sink assembly	1		KFR-72W/BP3N1-C10T2(TR).ZL.2.1
3.2	15500208000025	Liquid valve	1		GYF-A18N
3.3	12223000011652	Valve plate	1		KFR-51W-C01-1
3.4	15500210000125	Throttle valve	1		JLF(G)-054-W8-N6
3.5	15500210000344	Throttle valve	1		JLF(G)-050-N8-N6
4	12227000011039	Large handle	1		KFR-51W-C01.8A
5	12223000011664	Front Right Side Plate Assembly	1		KFR-51W-C01.5
6	12223000014493	Side panel assembly	1		KFR-51W-C02.7
7	11103020004119	DC Inverter Rotary Compressor	1		ATM240D57UMT
8	12225100000706	Chassis part	1		KFR-72W-C01.1
9	15823000006274	B unit condenser assembly	1		KFR-72W/BP2N1-C02(TR).ZL.1C
9.1	15823000006278	Condenser	1		KFR-72W/BP2N1-C02(TR).ZL.1.1C
9.2	15123000011686	Condenser input pipe assembly	1		KFR-72W/BP2N1-C02(TR).ZL.1.3
9.3	15423000004969	Condenser output pipe assembly	1		KFR-72W/BP2N1-C02(TR).ZL.1.2
10	12223000014488	Column	1		KFR-51W-C01.9(Z)
11	12100105000022	Axial flow fan	1		ZL-554*148*12-3KFN
12	12123000001921	Wind nets	1		WC01.SL-1(Z)
13	11002015000366	Brushless DC Motor	1		ZKFN-80-8-3
14	11201007000039	Room Temperature Sensor	1	T4	CGQ-WD/SW4100-L850-SMP2-P650(HT1.0)
15	11201007000250	Pipe Temperature Sensor	1	T3	CGQ-WD/GW4100-L1100-SMP3B-P850
16	11201007000083	Discharge Temperature Sensor	1	TP	CGQ-WD/PQ3950-L500-SMP2R-G400
17	12222200001465	Supporter subassembly of fan motor	1		KFR-51W-C01.2A
18	12223000014496	Top cover assembly	1		KFR-51W-C01.3C
19	12223000011657	Right front panel	1		KFR-51W-C01.4-1
20	12223000012497	Partition board assembly	1		KFR-72W/BP2N1-C01.6A

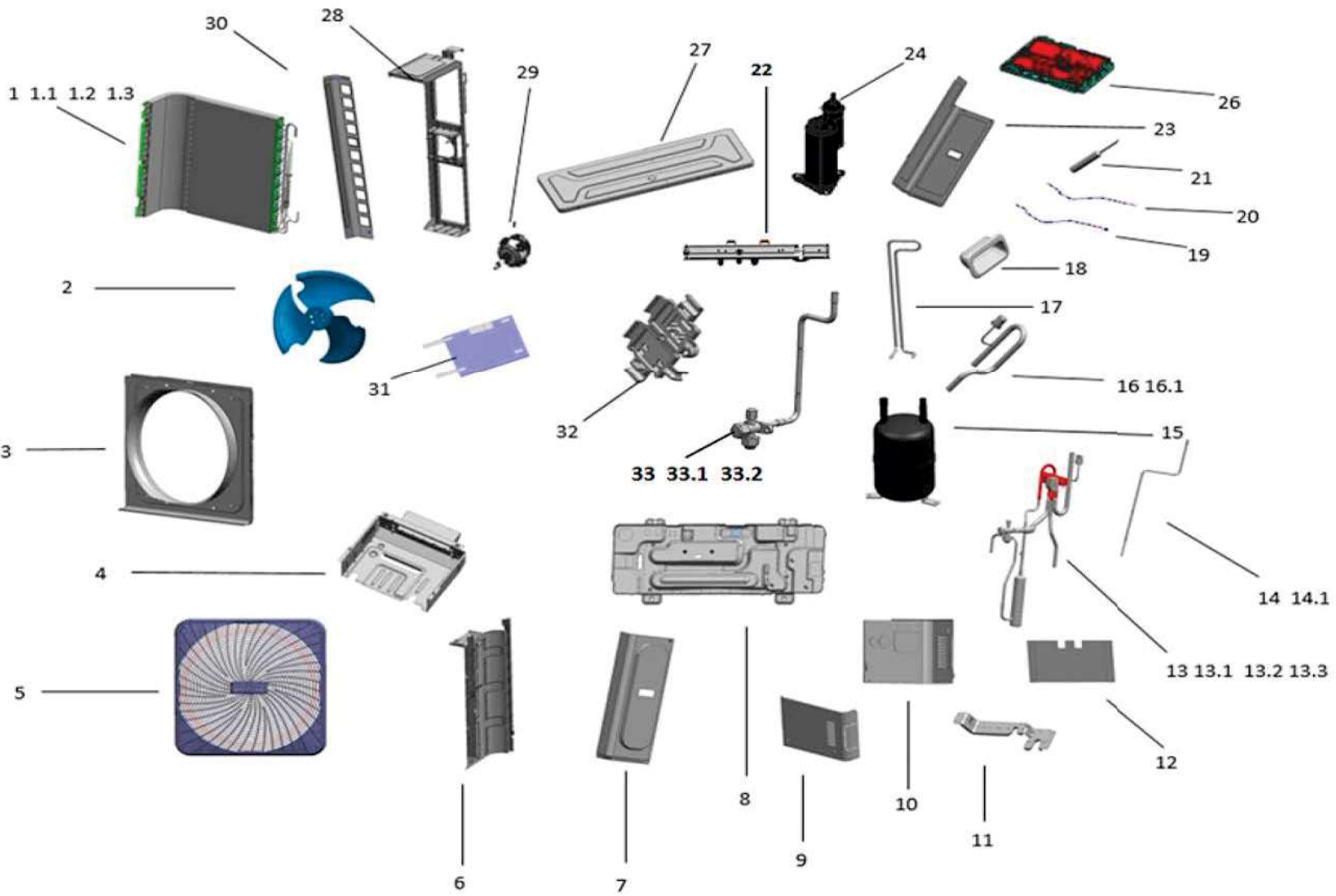
**Outdoor Unit Model:
ICHD036J0A-DMG105**



Model:ICHD036J0A-DMG105

EX_ID	Spare Parts Code	Part Name(EN)	Qty.	Remarks	Drawing No
1	15823000005184	Condenser part	1		KFR-120W/N1-5R1(E1).ZL.1
1.1	15827000001589	Condenser	1		KFR-120W/N1-5R1(E1).ZL.1.1
1.2	15127000008865	B condenser input pipe assembly	1		KFR-120W/N1-5R1(E1).ZL.1.3
1.3	15427000004347	Condenser output pipe assembly	1		KFR-120W/N1-5R1(E1).ZL.1.2
2	12100105000641	Axial fan	1		ZL-580*190*15-3
3	12223000012489	Front panel	1		KFR-120W/BP2N1-5R1(TR)-1
4	12223000012493	Electric control box welding assembly	1		KFR-120W/BP2N1-5R1(TR).D.1.1
5	12125300001380	Wind nets assembly	1		MDVH-V120W/N1-5R0(E1).3
6	12227000010105	Partition board assembly	1		MDVH-V120W/N1-5R1(E1).11
7	12227000010097	Front Right Side Plate Assembly	1		MDVH-V120W/N1-5R1(E1).6
8	12227000010100	Base assembly	1		MDVH-V120W/N1-5R1(E1).1
9	12227000010099	Rear Tube Side Plate	1		MDVH-V120W/N1-5R1(E1)-5
10	12227000010109	Front Tube Side Plate	1		MDVH-V120W/N1-5R1(E1)-7
11	12227000010098	Valve plate	1		MDVH-V120W/N1-5R1(E1)-12
12	12100701000196	Handle	1		MDVH-V120W/N1-612TR(E1)-3
13	15423000004964	Four-way valve assembly	1		KFR-120W/N1-5R1(E1).ZL.3
13.1	15500204000037	Gas valve	1		DYF-C16N1
13.2	15500216000153	Four-way valve kit	1		STF-02BN1-L600-VHR
13.3	17400516000032	Pressure switch	1		YK-4.4/3.2-600(UL)
14	15423000004963	High pressure valve assembly	1		KFR-120W/N1-5R1(E1).ZL.4
14.1	15500210003571	Throttle	1		JLF(G)-069-W8-N8
15	15500501001768	Gas-liquid separator	1		QYFLQ-16*1.8*126*V2.3(L)(G)
16	15423000004962	Suction pipe assembly	1		KFR-120W/N1-5R1(E1).ZL.2
16.1	17400516000022	Pressure switch	1		YK-0.05/0.15-540
17	15427000004346	Heat sink assembly	1		KFR-120W/N1-5R1(E1).ZL.5
17.1	15100113008680	Straight pipe	1		ZG-8*0.6*75(N8*8)
17.2	15500210003570	Throttle	1		JLF(G)-058-W8-N8
17.3	15427000004345	Heat sink assembly	1		KFR-120W/N1-5R1(E1).ZL.5.1
18	12125300002160	Handle	1		CE-MDV140W/DN1-610-13D
19	11201007000083	Discharge Temperature Sensor	1		CGQ-WD/PQ3950-L500-SMP2R-G400
20	11201007000025	Room Temperature Sensor	1		CGQ-WD/SW4100-L1000-SMP2-P900-02
21	11201007000382	Pipe Temperature Sensor	1		CGQ-WD/GW4100-L1300-SMP3B-P1200
22	11201007000147	Pipe Temperature Sensor	1		CGQ-WD/GW4100-L600-SMP3BL-P550
23	12227000010103	Right Rear Side Panel Assembly	1		MDVH-V120W/N1-5R1(E1).4
24	11103020004360	DC Inverter Rotary Compressor	1		KTM240D57UMT
25	17227000003661	E-part box assembly	1		KFR-120W/BP2N1-5R1(TR).D.2
25.1	12227000010106	Electrical appliance mounting plate assembly	1		MDVH-V120W/N1-5R1(E1).D.2.1
25.2	17400401000073	Wire joint	1		JXZ-AG3ZG1-A(RS9102/JX-O-3)
25.3	17400401000253	Wire joint	1		JXZ-AD6Z-E
26	17223000A05982	E-part box assembly	1		KFR-120W/BP2N1-5R1(TR).D.1(DZ)
27	12227000012486	Top cover assembly	1		MDVH-V120W/N1-5R1(E1).8A
28	12227000010102	Motor bracket I assembly	1		MDVH-V120W/N1-5R1(E1).9
29	11002015006321	Brushless DC Motor	1		ZKSP-170-8-9
30	12223000012491	Side panel assembly	1		KFR-120W/BP2N1-5R1(TR).1

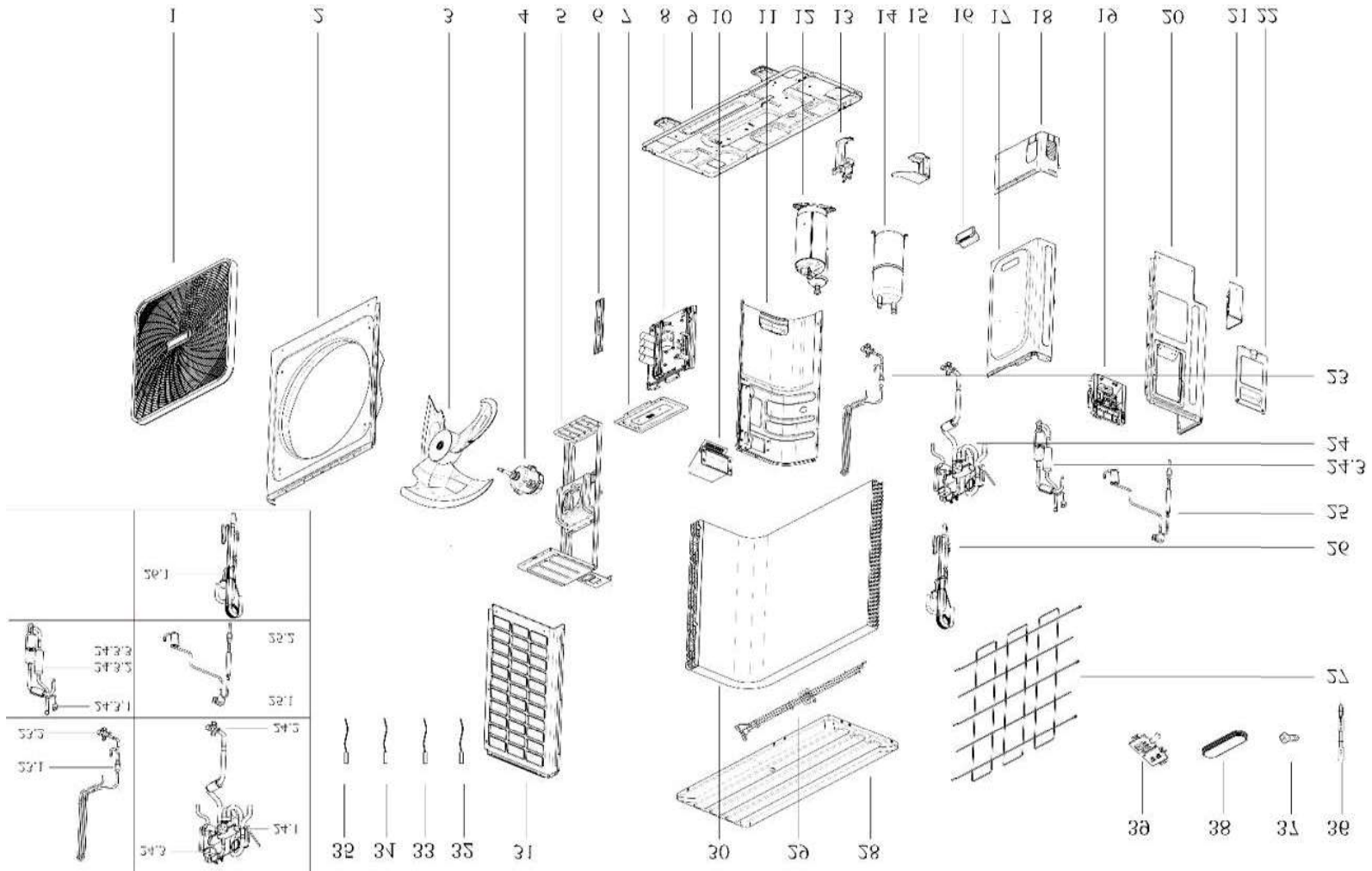
**Outdoor Unit Model:
ICHD048J0A-DMG140**



Model:ICHD048J0A-DMG140

EX_ID	Spare Parts Code	Part Name(EN)	Qty.	Remark2	Drawing No
1	15823000005182	Condenser part	1		KFR-140W/N1-5R1(E1).ZL.1
1.1	15827000001588	Condenser	1		KFR-140W/N1-5R1(E1).ZL.1.1
1.2	15127000007621	B condenser input pipe assembly	1		MDVH-V120W/N1-5R1(E1).ZL.1.2
1.3	15427000003566	Output pipe assembly I of condenser	1		MDVH-V120W/N1-5R1(E1).ZL.1.3
2	12100105000641	Axial fan	1		ZL-580*190*15-3
3	12223000012489	Front panel	1		KFR-120W/BP2N1-5R1(TR)-1
4	12223000012493	Electric control box welding assembly	1		KFR-120W/BP2N1-5R1(TR).D.1.1
5	12125300001380	Wind nets assembly	1		MDVH-V120W/N1-5R0(E1).3
6	12227000010105	Partition board assembly	1		MDVH-V120W/N1-5R1(E1).11
7	12227000010097	Front Right Side Plate Assembly	1		MDVH-V120W/N1-5R1(E1).6
8	12227000010100	Base assembly	1		MDVH-V120W/N1-5R1(E1).1
9	12227000010099	Rear Tube Side Plate	1		MDVH-V120W/N1-5R1(E1)-5
10	12227000010109	Front Tube Side Plate	1		MDVH-V120W/N1-5R1(E1)-7
11	12227000010098	Valve plate	1		MDVH-V120W/N1-5R1(E1)-12
12	12100701000196	Handle	1		MDVH-V120W/N1-612TR(E1)-3
13	15423000004960	Four-way valve assembly	1		KFR-140W/N1-5R1(E1).ZL.3
13.1	15500204000037	Gas valve	1		DYF-C16N1
13.2	15500216000153	Four-way valve kit	1		STF-02BN1-L600-VHR
13.3	17400516000032	Pressure switch	1		YK-4.4/3.2-600(UL)
14	15427700001590	Throttle assembly	1		KFR-140W/N1-5R1(E1).ZL.4
14.1	15500210003569	Throttle	1		JLF(G)-062H/C082-W8-N8
15	15500501001768	Gas-liquid separator	1		QYFLQ-16*1.8*126*V2.3(L)(G)
16	15423000004961	Suction pipe assembly	1		KFR-140W/N1-5R1(E1).ZL.2
16.1	17400516000022	Pressure switch	1		YK-0.05/0.15-540
17	15427000004344	Heat sink assembly	1		KFR-140W/N1-5R1(E1).ZL.5
17.1	15500204000008	Gas valve	1		DYF-A22N1
17.2	15500210003568	Throttle	1		JLF(G)-112-W8-N8
17.3	15427000004345	Heat sink assembly	1		KFR-120W/N1-5R1(E1).ZL.5.1
18	12125300002160	Handle	1		CE-MDV140W/DN1-610-13D
19	11201007000083	Discharge Temperature Sensor	1		CGQ-WD/PQ3950-L500-SMP2R-G400
20	11201007000025	Room Temperature Sensor	1		CGQ-WD/SW4100-L1000-SMP2-P900-02
21	112010070000382	Pipe Temperature Sensor	1		CGQ-WD/GW4100-L1300-SMP3B-P1200
22	11201007000147	Pipe Temperature Sensor	1		CGQ-WD/GW4100-L600-SMP3BL-P550
23	12227000010103	Right Rear Side Panel Assembly	1		MDVH-V120W/N1-5R1(E1).4
24	11103020006699	DC Inverter Rotary Compressor	1		ATF400D64UMTC
25	17227000003661	E-part box assembly	1		KFR-120W/BP2N1-5R1(TR).D.2
25.1	12227000010106	Electrical appliance mounting plate assembly	1		MDVH-V120W/N1-5R1(E1).D.2.1
25.2	17400401000073	Wire joint	1		JXZ-AG3ZG1-A(RS9102/JX-O-3)
25.3	17400401000253	Wire joint	1		JXZ-AD6Z-E
26	17223000A05978	E-part box assembly	1		KFR-140W/BP2N1-5R1(TR).D.1(DZ)
27	12227000012486	Top cover assembly	1		MDVH-V120W/N1-5R1(E1).8A
28	12227000010102	Motor bracket I assembly	1		MDVH-V120W/N1-5R1(E1).9
29	11002015006321	Brushless DC Motor	1		ZKSP-170-8-9
30	12223000012491	Side panel assembly	1		KFR-120W/BP2N1-5R1(TR).1

**Outdoor Unit Model:
ICHD060J0A-DMG160**



Model:ICHD060J0A-DMG160

EX_ID	Spare Parts Code	Part Name(EN)	Qty.	Remark2	Drawing No
1	12125300001380	Wind nets assembly	1		MDVH-V120W/N1-5R0(E1).3
2	12227000007792	Right front panel	1		MDVH-V120W/N1-5R0(E1)-3
3	12100105000641	Axial fan	1		ZL-580*190*15-3
4	11002015006321	Brushless DC Motor	1		ZKSP-170-8-9
5	12227000007797	Motor bracket I assembly	1		MDVH-V120W/N1-5R0(E1).12
6	12225200005232	Clamp	1		MDVH-V120W/N1-5R0(E1).D.1-3
7	12227000007932	E-Part box cover	1		MDVH-V120W/N1-5R0(E1)-16
8	17227000A05790	E-part box assembly	1		MDVH-V160W/N1-5R1(E1).D.2(DZ1)
8.1	17127000A03863	Outdoor main control board assembly	1		MDVH-V160W/N1-615TR(E1).D.1.1(DZ1)
8.2	12227000007772	E-part box	1		MDVH-V120W/N1-5R0(E1).D.1.2
8.3	12227000007773	E-part box	1		MDVH-V120W/N1-5R0(E1).D.1.3
8.4	12125000000209	Wire across clasp	1		MDVH-V120W/N1-5R0(E1).D.1-11
8.5	17127000008781	Filter board assembly	1		MDVH-V160W/N1-615(TR).D.2.1.1.2
9	12227000007805	Base assembly	1		MDVH-V120W/N1-5R0(E1).1
10	12127000000496	Rainproof cover	1		MDVH-V120W/N1-5R0(E1)-20
11	12227000007807	Partition board assembly	1		MDVH-V120W/N1-5R0(E1).10
12	11103020003279	DC Inverter Rotary Compressor	1		ATF400D64UMV
13	12227000007793	Valve plate	1		MDVH-V120W/N1-5R0(E1)-11
14	15500501001708	Seporator	1		QYFLQ-19*16*1.8*128*V4.1(G)
15	12227000007804	Support plate	1		MDVH-V120W/N1-5R0(E1)-15
16	12100701000196	Handle	1		MDVH-V120W/N1-612TR(E1)-3
17	12227000007796	Front Right Side Plate Assembly	1		MDVH-V100W/N1-5R0(E1).5
18	12227000007806	Clapboard	1		MDVH-V120W/N1-5R0(E1)-9
19	17225300002340	Terminal electrical control box assembly	1		MDVH-V160W/N1-5R1(E1).D.3
19.1	12127000000556	Wire connecting box assembly	1		MDVH-V120W/N1-5R0(E1).D.1.6
19.2	17400401000073	Wire joint	1		JXZ-AG3ZG1-A(RS9102/JX-O-3)
19.3	17400401000253	Wire joint	1		JXZ-AD6Z-E
20	12227000011768	Rear-Right Side Plate Assembly	1		MDVH-V160W/N1-5R1(E1).7
21	12227000007795	Clapboard	1		MDVH-V120W/N1-5R0(E1)-8
22	12227000007741	Big handle assembly	1		MDVH-V120W/N1-5R0(E1).6
23	15427000A01913	High pressure valve assembly	1		MCR3-X 160M.ZL.5
23.1	15427000002482	Heat sink assembly	1		MDVH-V120W/N1-615TR(E1).ZL.7
23.2	15500204000008	Gas valve	1		DYF-A22N1
24	15427000A01914	Four-way valve assembly	1		MCR3-X 160M.ZL.2
24.1	15500216000103	4-way valve suite	1		STF-02BN1-L800-VHR
24.2	15500204000365	Low pressure valve	1		DYF-C16N1(B)
24.3	15427000A01912	Air discharge pipe assembly	1		MCR3-X 160M.ZL.2.1
24.3.1	17400516000032	Pressure switch	1		YK-4.4/3.2-600(UL)
24.3.2	15500508000135	Accumulator tank	1		ZYG-03C
26	15427000A01915	Suction pipe assembly	1		MCR3-X 160M.ZL.3
26.1	17400516000022	Pressure switch	1		YK-0.05/0.15-540
27	12125300001380	Wind nets assembly	1		MDVH-V120W/N1-5R0(E1).3
28	12227000007794	Top cover assembly	1		MDVH-V120W/N1-5R0(E1).4
29	17401203018899	Compressor wire joint assembly	1		YSJ825-P-RDO-BLO-BKO-12#-CH(150°C)
30	15827000001528	Condenser part	1		MDVH-V140W/N1-5R1(E1).ZL.1
31	12227000007803	Clapboard	1		MDVH-V120W/N1-5R0(E1)-2
33	11201007003028	Room Temperature Sensor	1	T4	CGQ-WD/SW4100-L700-SMP2WH-P650(H1.0)
34	11201007000382	Pipe Temperature Sensor	1	T3	CGQ-WD/GW4100-L1300-SMP3B-P1200
35	11201007002460	Discharge Temperature Sensor	1	T5	CGQ-WD/PQ3950-L500-XAP2-G450(WK30)
37	12100509000553	Drain hose	1		RF26WWW/S-8R0L.11
38	12627000000002	Chassis waterproof cover	1		CE-MDV140W/DN1-610-12
39	12100303001022	Sensor clamp	1		WBK-10A