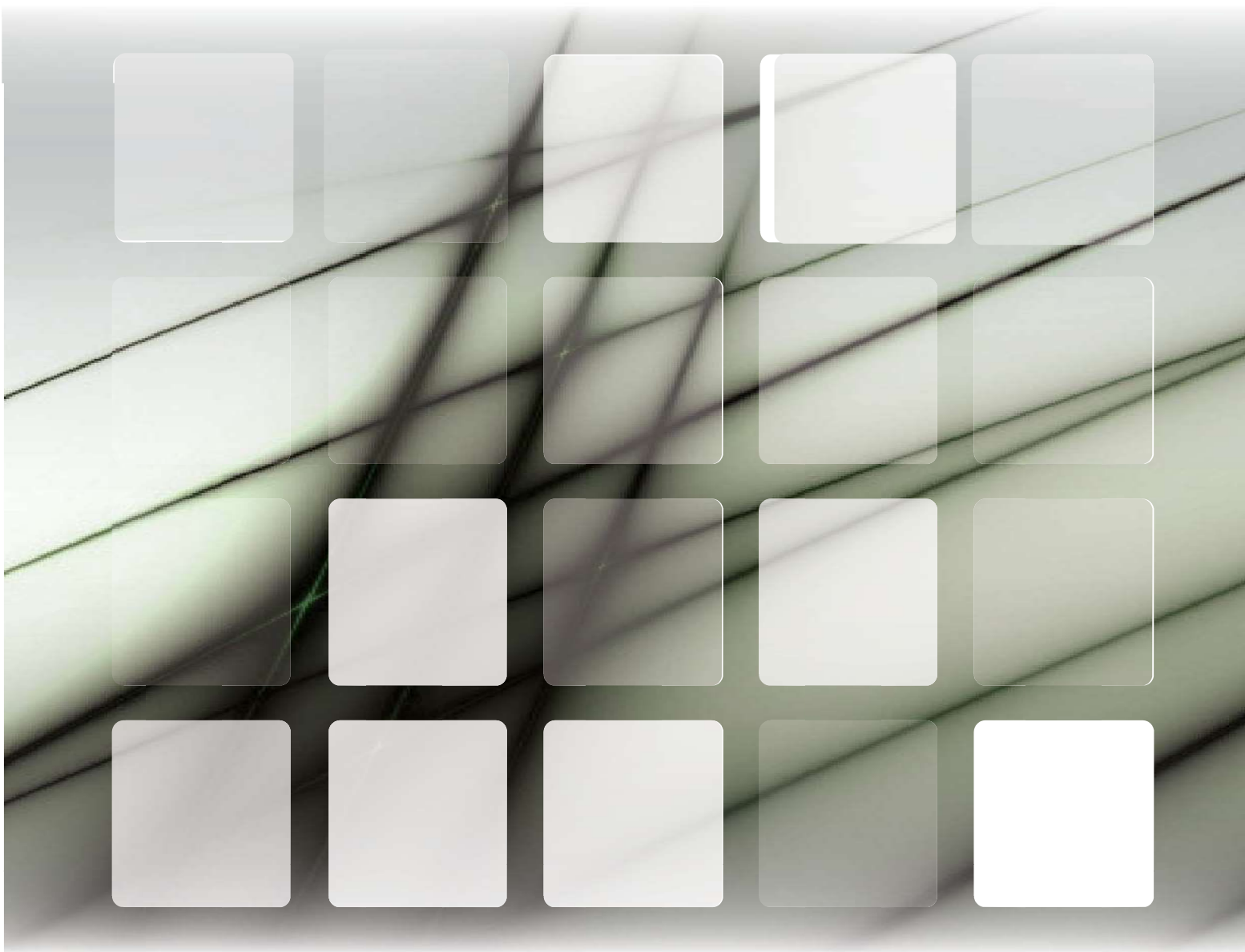


ERVR Series

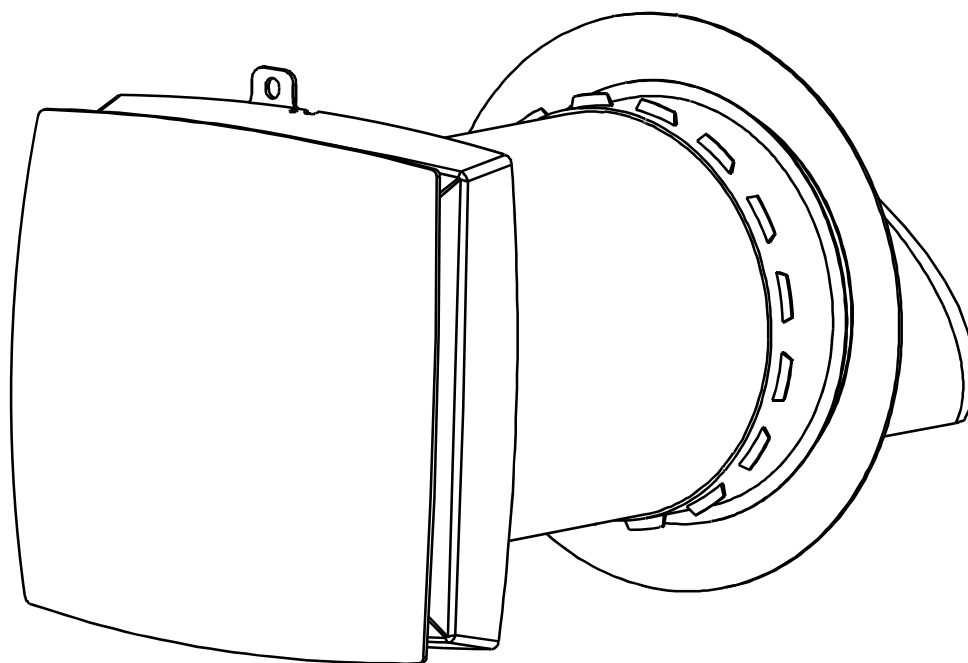
Mini-Split Energy Recovery Ventilator

Installation Manual



CONTENT

1. Safety Requirements	1
2. Introduction	3
3. Installation Manual	4
3.1 Design and Operating.....	5
3.2 Assembly Drawing.....	5
3.3 Operation modes.....	5
3.4 Ventilator Mounting.....	5
4. Remote Control Function	4



1. Safety Precautions


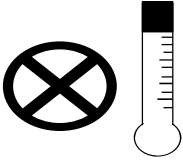
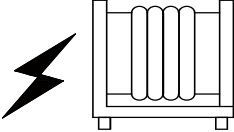
SAFTY REQUIREMENTS

- Read the user's manual carefully before the operation and installation of the heat recovery ventilator AA-TTW6
- Installation and operation of the ventilator shall be performed in accordance with the present user's manual as well as the provisions of all the applicable local and national construction, electrical and technical codes and standards.
- The warnings contained in the present user's manual must be considered seriously since they contain vital personal safety information.
- Failure to follow the safety regulations may result in an injury or ventilator damage.
- Read the manual carefully and keep it as long as you use the ventilator.
- While transferring the ventilator control the user's manual must be turned over to the receiving operator.


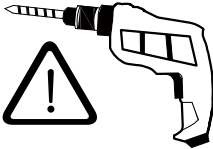
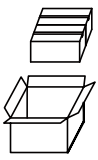
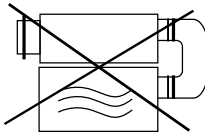
SYMBOL LEGEND USED IN THE MANUAL:

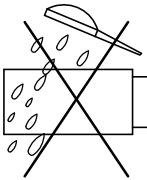
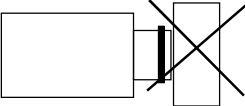
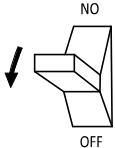
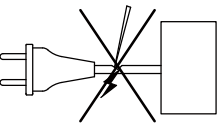
	WARNING!
	DO NOT!

VENTILATOR MOUNTING SAFETY PRECAUTIONS


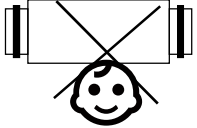
	The ventilator must be disconnected from the power supply prior to every installation or repair operation.
	The ventilator must not be operated outside the temperature range stated in the user's manual or in aggressive or explosive environments.
	Do not position any heating devices or other equipment in close proximity to the ventilator power cord.

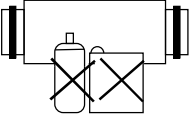
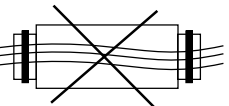
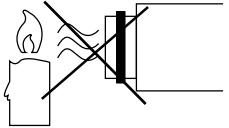
1. Safety Precautions

	<p>Do not use damaged equipment or conductors to connect the ventilator to power mains.</p>
	<p>While installing the ventilator follow the safety regulations specific to the use of electric tools.</p>
	<p>Unpack the ventilator with care.</p>
	<p>Use the ventilator only as intended by the manufacturer.</p>

	<p>Do not wash the ventilator with water. Protect the ventilator electric parts from water ingress.</p>
	<p>Do not block the air duct when the ventilator is on.</p>
	<p>Disconnect the ventilator from power supply before maintenance.</p>
	<p>Do not damage the power cable while operating the ventilator. Do not put any objects on the power cable.</p>

VENTILATOR MOUNTING SAFETY PRECAUTIONS

	<p>Do not touch the controller or the remote control with wet hands. Do not carry out the ventilator maintenance with wet hands.</p>
	<p>Do not let children operate the ventilator.</p>

	<p>Keep explosive and inflammable products away of the ventilator.</p>
	<p>Do not open the operating ventilator.</p>
	<p>Do not let air flow from the ventilator be directed to the open flame devices or candles.</p>

INTRODUCTION

This user's manual includes technical description operation, installation and mounting guidelines, technical data for the heat recovery ventilator AA-TTW6.

USE

- The ventilator is designed to arrange permanent controllable air exchange in apartments, villas, hotels, cafes and other domestic and public buildings. The ventilator is equipped with a ceramic heat exchanger that enables supply of fresh air and extract air with heat energy recovery.
- The ventilator is designed for through-the-wall mounting. The telescopic ventilator design enables its installation in the walls from 230 mm to 420mm thickness for the ventilator AA-TTW6.
- The ventilator is rated for continuous operation always connected to power mains.
- Transported air must not contain any flammable or explosive mixtures, evaporation of chemicals, coarse dust, soot and oil particles, sticky substances, fibrous materials, pathogens or any other harmful substances.



BE USED BY CHILDREN PHYSICAL BE USED BY CHILDREN PHYSICALLY OR MENTALLY DISABLED PERSONS, PERSONS WITH SENSORY DISORDER, PERSONS WITH NO APPROPRIATE QUAUFICATIONH.

INSTALLATION AND CONNECTION OPERATIONS MUST BE PERFORMED ONLY BY PROPERLY QUALIFIED PERSONNEL AFTER THE APPROPRIATE SAFETY BRIEFING. THE VENTILATOR INSTALLATION SITES MUST PREVENT ACCESS BY UNATTENDED CHILDREN.

DELIVERY SET

Ventilator	1
Accessories bag	1
Remote controller	1
User's manual	1
Packing box	1

DESIGN AND OPERATING

The ventilator consists of the telescopic air duct with adjustable length regulated by position of the inner air duct inside the outer air duct, the ventilation unit and the ventilation hood.

Two filters and the ceramic core are located inside the inner duct. The filters are designed to purify supply air and prevent foreign object ingress to the heat exchanger and the fan.

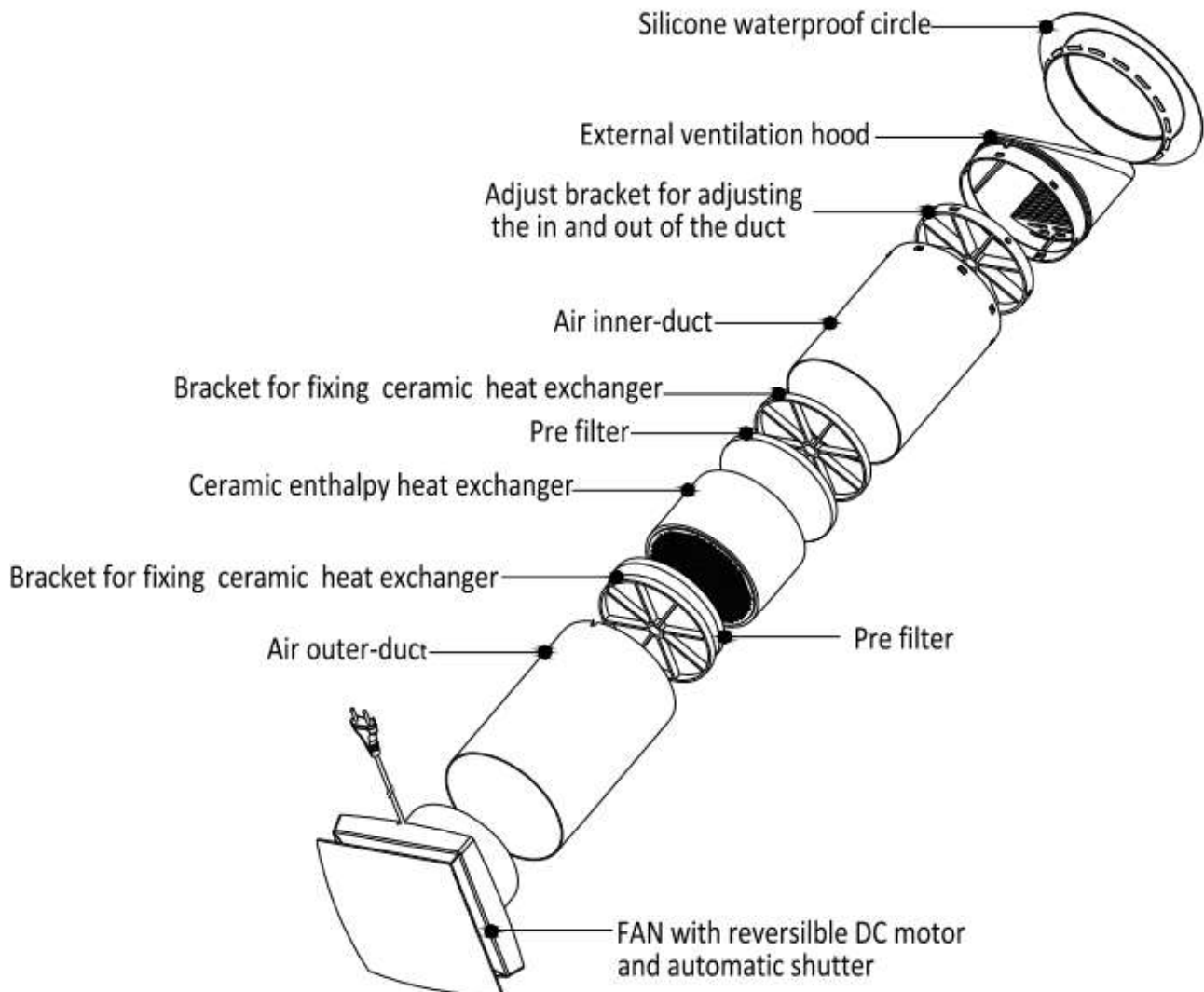
The ceramic heat exchanger extract air heat energy to warm up or cool down supply airflow.

The heat exchanger is equipped with a pull cord inside to facilitate its withdrawal from the ventilator. The heat exchanger is installed on an insulation material used as a sealant as well.

The ventilator must be installed on inner side of the wall.

The ventilation hood must be installed on outer side of the wall to prevent ingress of water and other objects to the ventilator.

ASSEMBLY DRAWING



OPERATION MODES

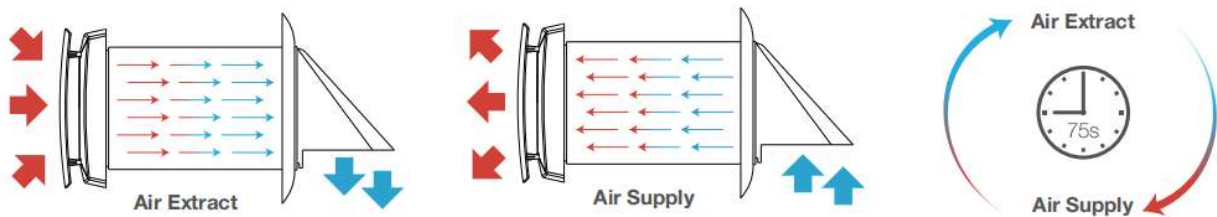
Ventilation Mode. The ventilator runs in the air extract or air supply mode with a set speed. In case of synchronous operation of two connected ventilators one unit operates in the supply mode and the other one in the extract mode.

Regeneration Mode. The ventilator runs in two cycles, 75 seconds each, to provide heat and moisture regeneration.

Interval 1 The warm polluted air is extracted from the room and flows through the ceramic regenerator, which gradually absorbs heat and moisture. In 75 seconds after warming is started the ventilator switches to the air supply mode.

Interval 2 The fresh and cold outdoor air flows through the heat regenerator and absorbs the accumulated moisture and heat so that the supply air flow has the room temperature. In 75 seconds, when the energy regenerator gets cold, the ventilator switches to the air extract mode. The cycle starts from the beginning.

If two ventilators are installed, they run in opposite phases. While one ventilator supplies fresh air, the second one extracts air from the room.



MOUNTING AND SET-UP



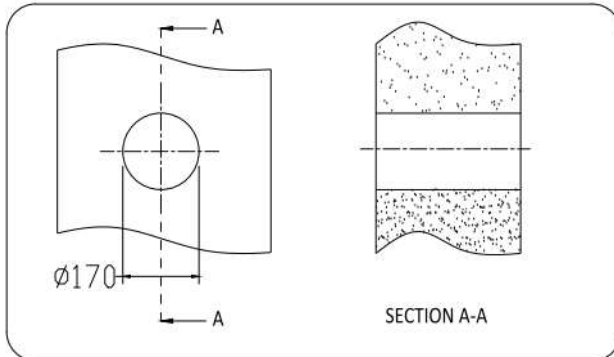
CAUTION!

READ THE USER'S MANUAL PRIOR TO MOUNTING THE VENTILATOR

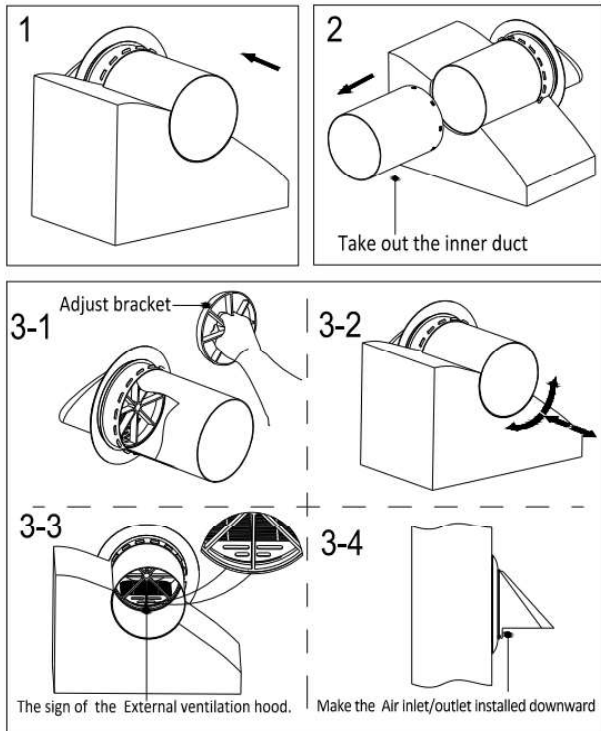
The ventilator must not be installed in sites where the air duct may be clogged by the blinds, curtains, drapes, etc, to prevent the room dust deposition and accumulation, also, curtains might obstruct normal airflow in the room, thus rendering ventilator operation not efficient.

VENTILATOR MOUNTING

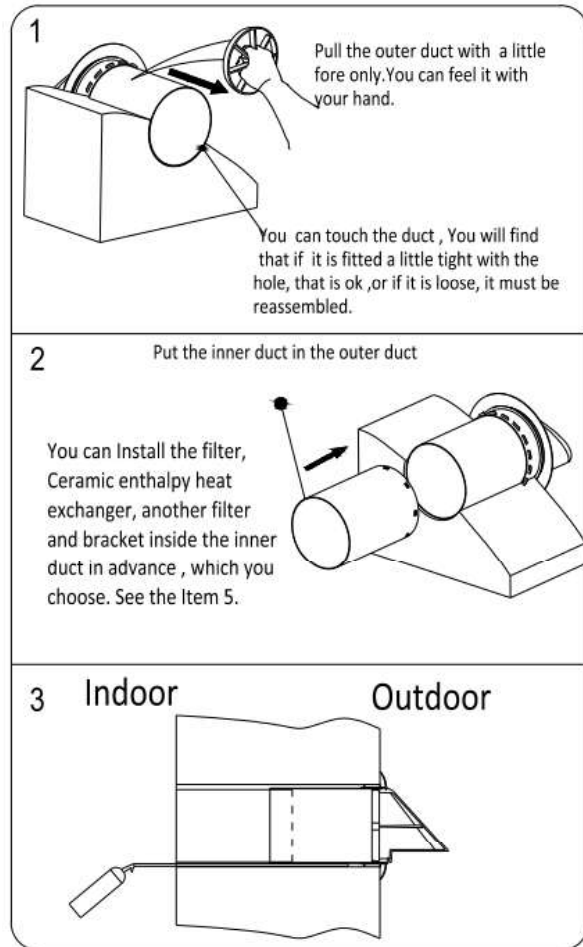
1. Prepare a round hole through in the wall . The hole size is shown below.



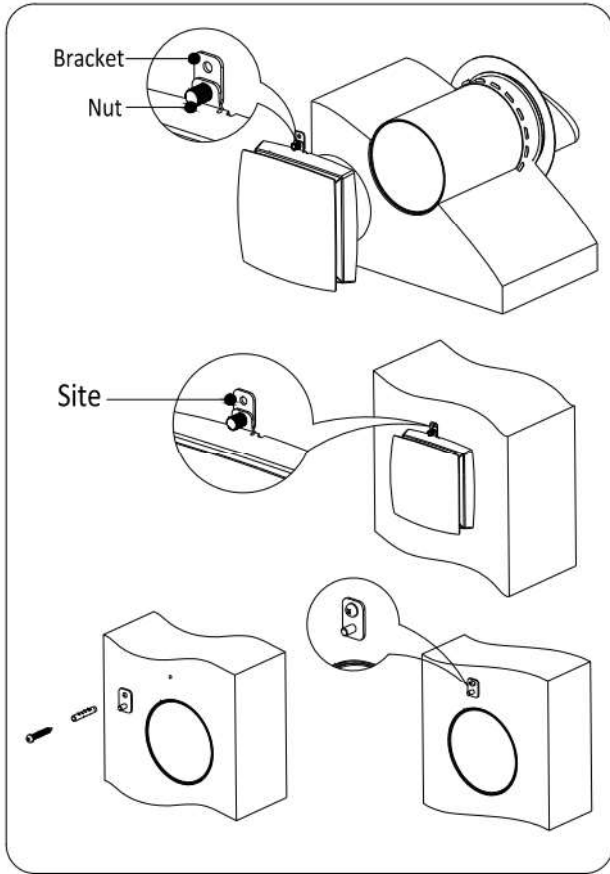
2. Assembly inner duct and outer duct together to adapt to the thickness of wall. Then take out the inner duct. Handle the bracket to turn the outer duct forward and backward, left and right to make the Air inlet/outlet installed downward correctly by the sign of the External ventilation hood.



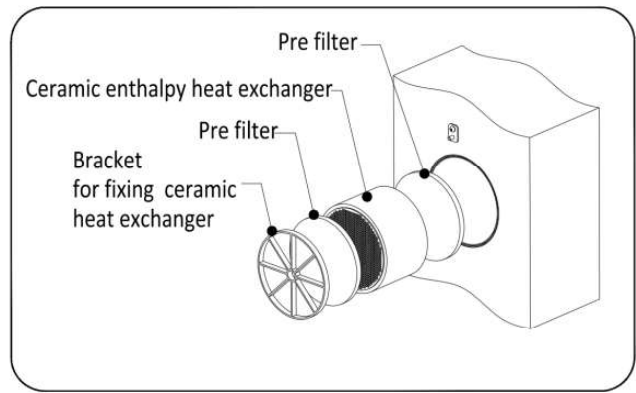
3. Through the wall hole from indoor, and pull back the duct by the adjust bracket to make the inner side rubber ring cling to the outside wall. Then put the inner duct in the hole and assembly inner duct and outer duct together. Fill the gap between the wall and duct with foam glue (Using waterproof sealing glue for the gap close to indoor to against rainwater). The inner duct should parallel with indoor wall surface.



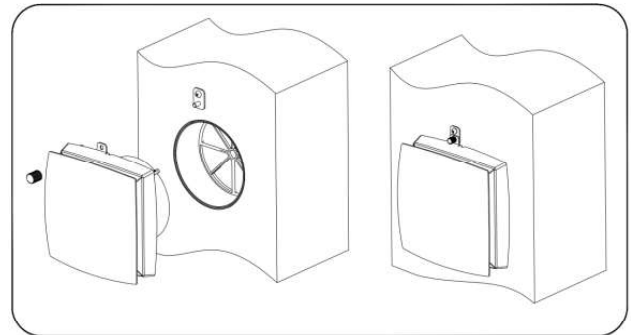
4. Put the fan on the surface wall as the location, which the bracket and the nut are installed on the fan in advance , that the duct of the fan must be into the inner duct. Marking the drilling hole site. After put the fan out Drilling 1*6mm hole on the marking place and put in the rubber plug(as pack accessories) .Install the retaining bracket with a screw(as pack accessories)



5. Install the filter, Ceramic enthalpy heat exchanger, another filter and bracket inside the inner duct. In this item , carry out the step in advance in the item 3, which you have Put the fittings in the inner duct.



6. Install the fan on the surface wall. The fan is fixed with nut.



7. If you install the ventilator in the absence of rain , you can attach the rubber ring of the accessories bag to the out outer duct with the silicone glue. Don't fill the gap between the wall and duct with foam glue.

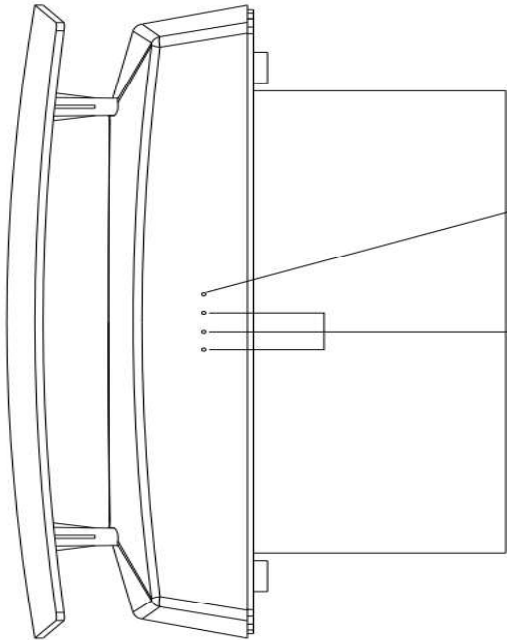
CONNECTION TO POWER MAINS



DISCONNECT THE VENTILATION FROM POWER MAINS TO ANY ELECTRIC INSTALLATION OPERATIONS.

The ventilator is rated for connection to single-phase AC220-240 V/50-60 Hz power mains. Connect the ventilator to the socket directly.

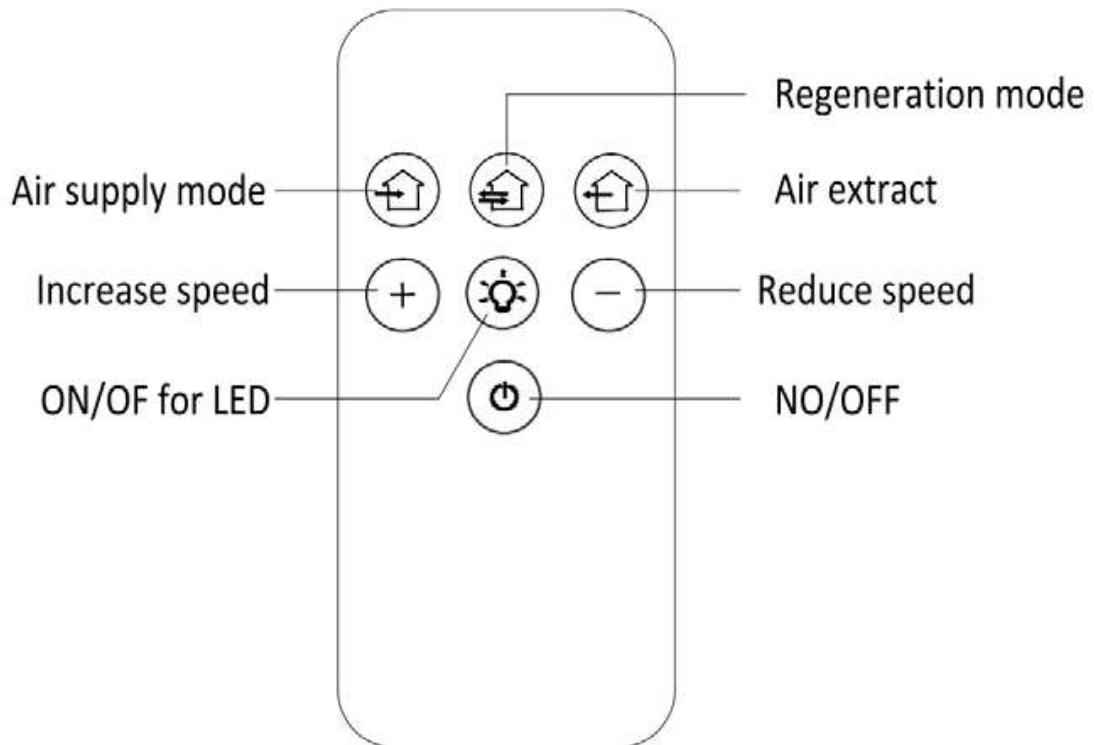
REMOTE CONTROL FUNCTION DESCRIPTION Electrical parameter



④ Infrared sensor

① ② ③ LED for RGB

- The three leds only show the same color at the same time, which you can close the led by the remote controller.
- The green shows as air supply.
- The red shows as air exhaust.
- The yellow shows as automatic mode which is changed in 75s between the air supply and the air exhsust.
- 3 speed fan control for lighting the number of the led.



Air supply mode

Increase speed

ON/OFF for LED

Regeneration mode

Air extract

Reduce speed

NO/OFF



OMEGA
ENVIRONMENTAL
TECHNOLOGIES LLC.

17702 Mitchell North, #101
Irvine, CA. 92614 .USA
Tel: 714 795 2830
Fax: 714 966 1646
info@otecomega.com
www.otecomega.com

OTECTM
AIR CONDITIONING

Showroom & Technology Center
11380 Interchange Circle North
Miramar, FL 33025 .USA
Tel: 305 901 1270
Fax: 954 212 8280
info@omegainverter.com
www.omegainverter.com
ERVRA0N-IM1H0722